



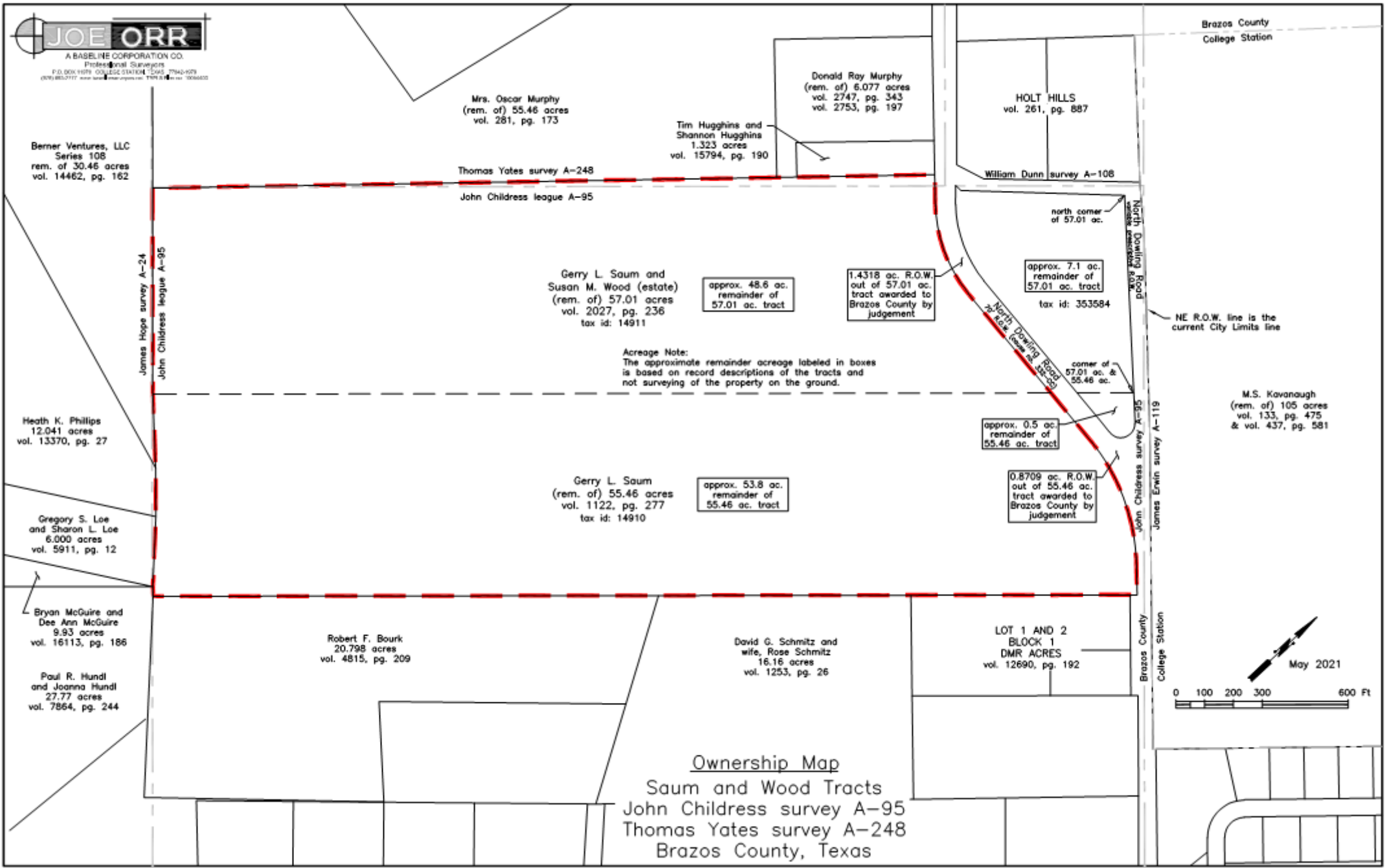
Regular Agenda Item 9.4

Westside Community Park - Saum Property
Condemnation Resolution
August 26, 2021



Summary

- City entered into agreement with Gerry Saum on September 11, 2017
- 102.4 acres for public park
- Resolution authorizes eminent domain proceedings to acquire land



Mrs. Oscar Murphy
 (rem. of) 55.46 acres
 vol. 281, pg. 173

Donald Ray Murphy
 (rem. of) 6.077 acres
 vol. 2747, pg. 343
 vol. 2753, pg. 197

Tim Huggins and
 Shannon Huggins
 1.323 acres
 vol. 15794, pg. 190

HOLT HILLS
 vol. 261, pg. 887

Berner Ventures, LLC
 Series 108
 rem. of 30.46 acres
 vol. 14462, pg. 162

Thomas Yates survey A-248
 John Childress league A-95

William Dunn survey A-108

Gerry L. Saum and
 Susan M. Wood (estate)
 (rem. of) 57.01 acres
 vol. 2027, pg. 236
 tax id: 14911

approx. 48.6 ac.
 remainder of
 57.01 ac. tract

1.4318 ac. R.O.W.
 out of 57.01 ac.
 tract awarded to
 Brazos County by
 judgement

approx. 7.1 ac.
 remainder of
 57.01 ac. tract
 tax id: 353584

north corner
 of 57.01 ac.

Acreage Note:
 The approximate remainder acreage labeled in boxes
 is based on record descriptions of the tracts and
 not surveying of the property on the ground.

NE R.O.W. line is the
 current City Limits line

M.S. Kavanaugh
 (rem. of) 105 acres
 vol. 133, pg. 475
 & vol. 437, pg. 581

Heath K. Phillips
 12.041 acres
 vol. 13370, pg. 27

Gerry L. Saum
 (rem. of) 55.46 acres
 vol. 1122, pg. 277
 tax id: 14910

approx. 53.8 ac.
 remainder of
 55.46 ac. tract

approx. 0.5 ac.
 remainder of
 55.46 ac. tract

0.8709 ac. R.O.W.
 out of 55.46 ac.
 tract awarded to
 Brazos County by
 judgement

corner of
 57.01 ac. &
 55.46 ac.

Gregory S. Loe
 and Sharon L. Loe
 6.000 acres
 vol. 5911, pg. 12

Bryan McGuire and
 Dee Ann McGuire
 9.93 acres
 vol. 16113, pg. 186

Robert F. Bourk
 20.798 acres
 vol. 4815, pg. 209

David G. Schmitz and
 wife, Rose Schmitz
 16.16 acres
 vol. 1253, pg. 26

LOT 1 AND 2
 BLOCK 1
 DMR ACRES
 vol. 12690, pg. 192

Paul R. Hundt
 and Joanna Hundt
 27.77 acres
 vol. 7864, pg. 244

Ownership Map
 Saum and Wood Tracts
 John Childress survey A-95
 Thomas Yates survey A-248
 Brazos County, Texas

