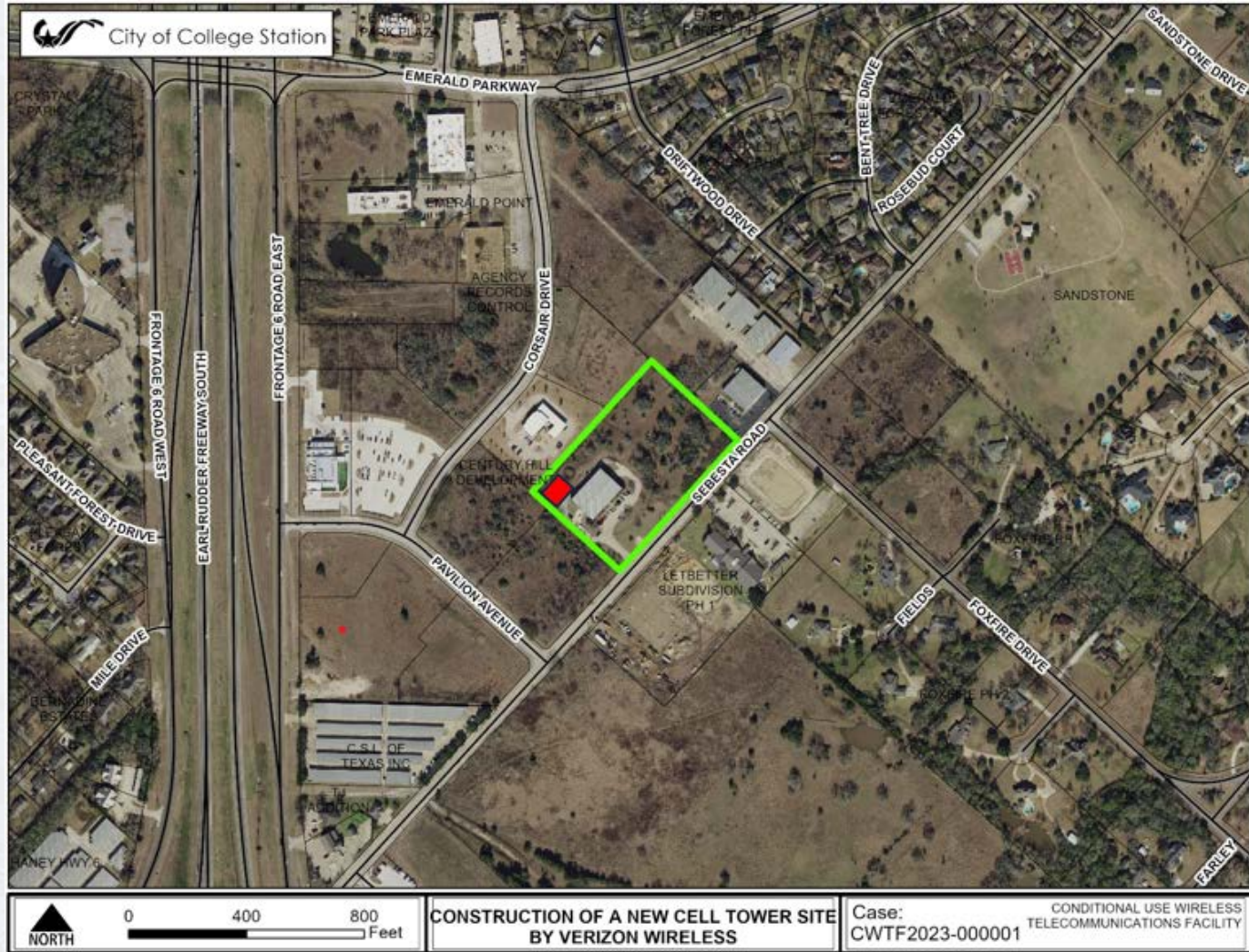


Item # 8.1
Conditional Use
Wireless Telecommunication Facility

1593 Sebesta Rd





Wireless Telecommunication Facilities

- 3 different categories
 - Unregulated Facilities (no review or approval)
 - Small antennas
 - Intermediate Facilities (permitted by right in specific zoning districts)
 - Towers less than 35 ft in height
 - Larger antennas
 - Antenna collocating on existing towers
 - Major Facilities (conditional use permit needed)
 - Towers greater than 35 ft in height



Requirements

Setbacks (equal distance)

- 950 ft from residential structure
- 940 ft from closest GS General Suburban zoning boundary

Proximity to major thoroughfare (291 ft)

- 1,300 ft from State Highway 6 S

Separation between towers (3,500 ft)

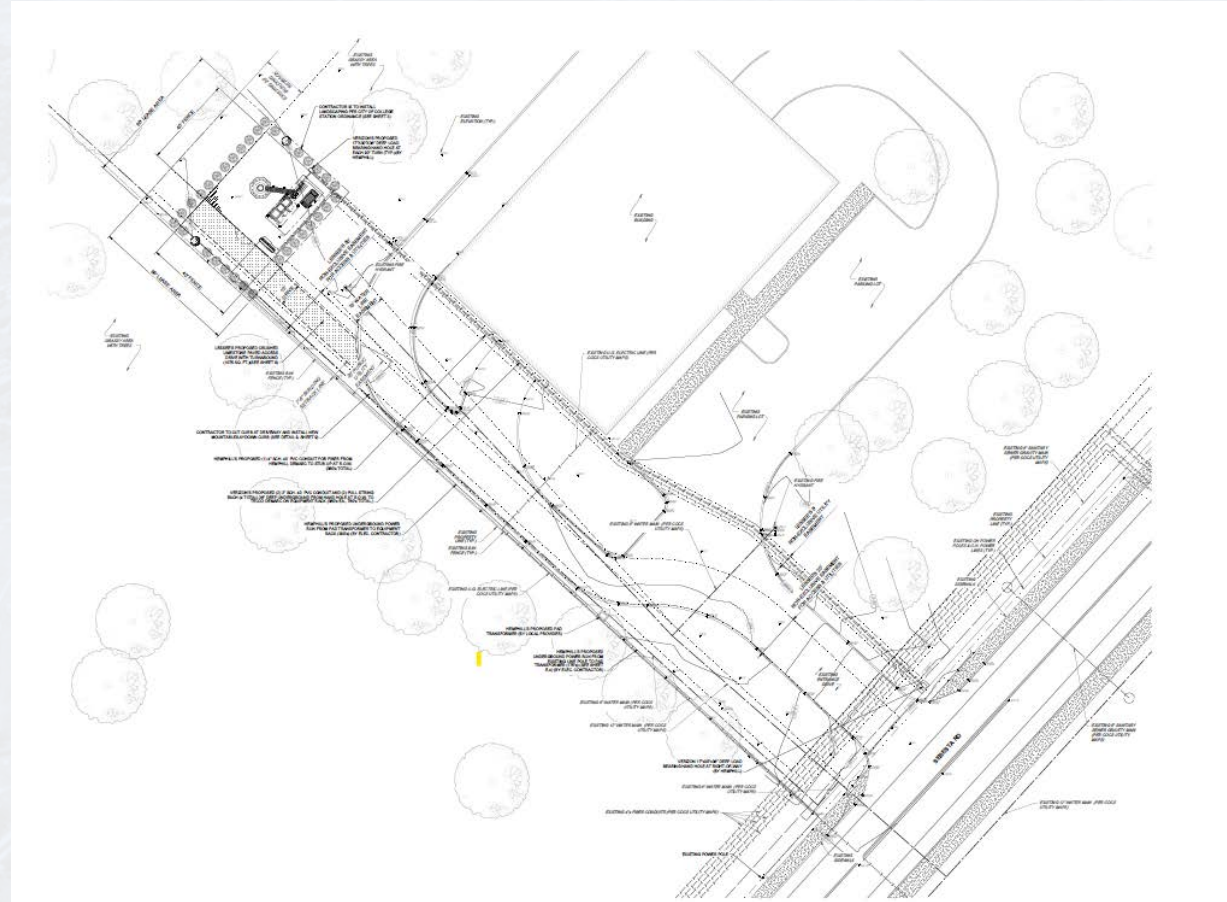
- Nearest tower is over 5,300 ft away from proposed tower

Height Limitations (less than 150 ft)

- 97 ft

Landscaping

- Proposed landscaping and fence for screening



Visual Impacts (Photo Simulation)



East



North



South



West



From Nearest
Residence

