

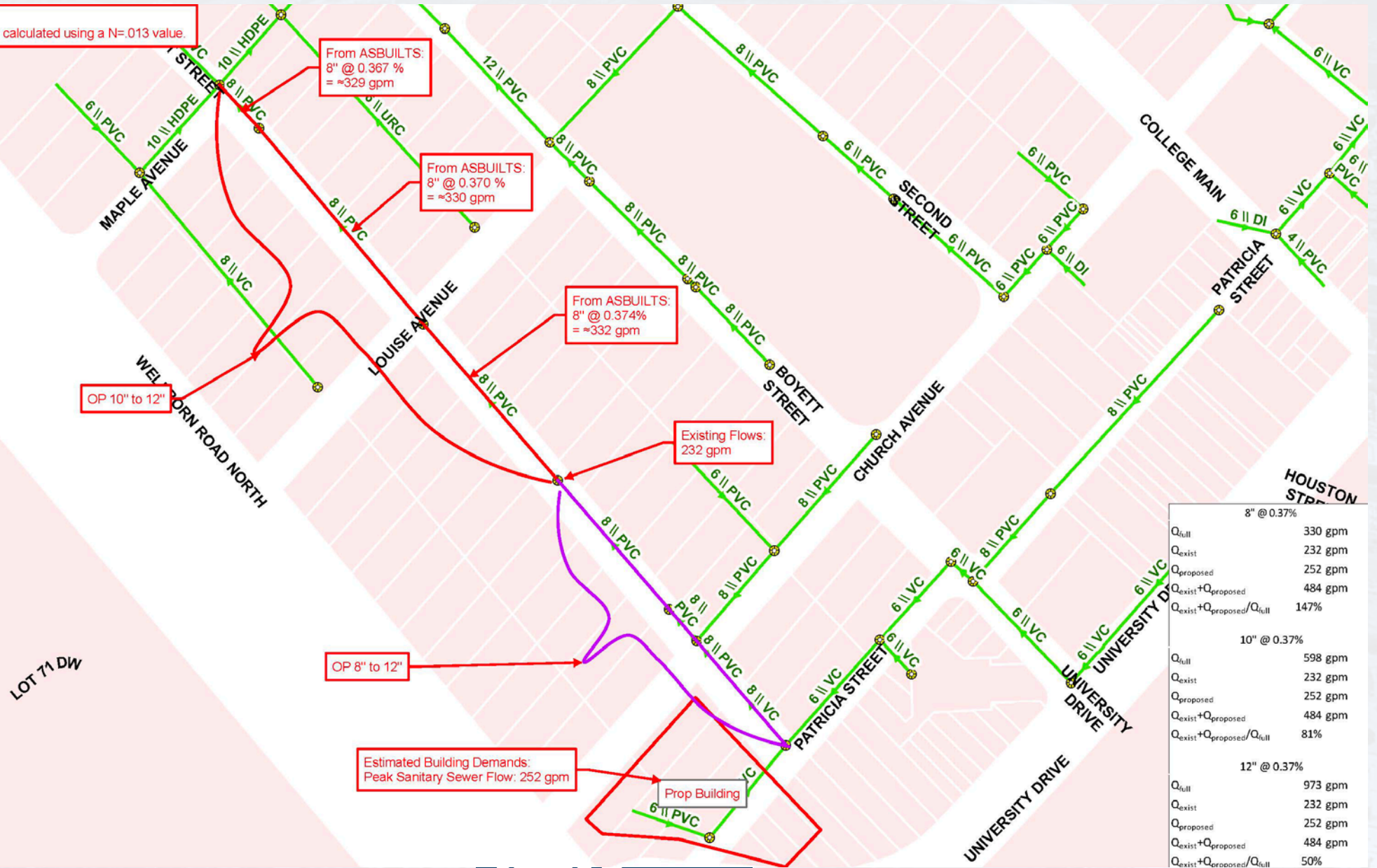
Oversized Participation Agreement

May 13th, 2024 City Council

Item 9.4

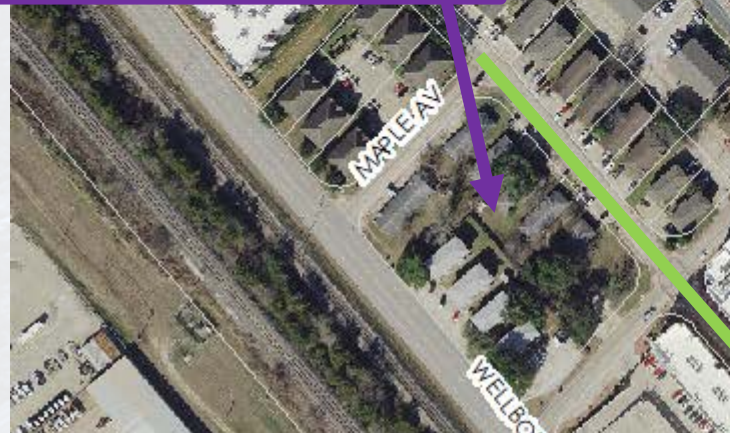


Note:
All capacities have been calculated using a N=.013 value.



8" @ 0.37%	
Q_{full}	330 gpm
Q_{exist}	232 gpm
$Q_{proposed}$	252 gpm
$Q_{exist}+Q_{proposed}$	484 gpm
$Q_{exist}+Q_{proposed}/Q_{full}$	147%
10" @ 0.37%	
Q_{full}	598 gpm
Q_{exist}	232 gpm
$Q_{proposed}$	252 gpm
$Q_{exist}+Q_{proposed}$	484 gpm
$Q_{exist}+Q_{proposed}/Q_{full}$	81%
12" @ 0.37%	
Q_{full}	973 gpm
Q_{exist}	232 gpm
$Q_{proposed}$	252 gpm
$Q_{exist}+Q_{proposed}$	484 gpm
$Q_{exist}+Q_{proposed}/Q_{full}$	50%

Otto
401 First St.



Nova
100 Church St.

