



BRAZOS VALLEY  
ECONOMIC DEVELOPMENT  
CORPORATION

# INNOVATION MODEL

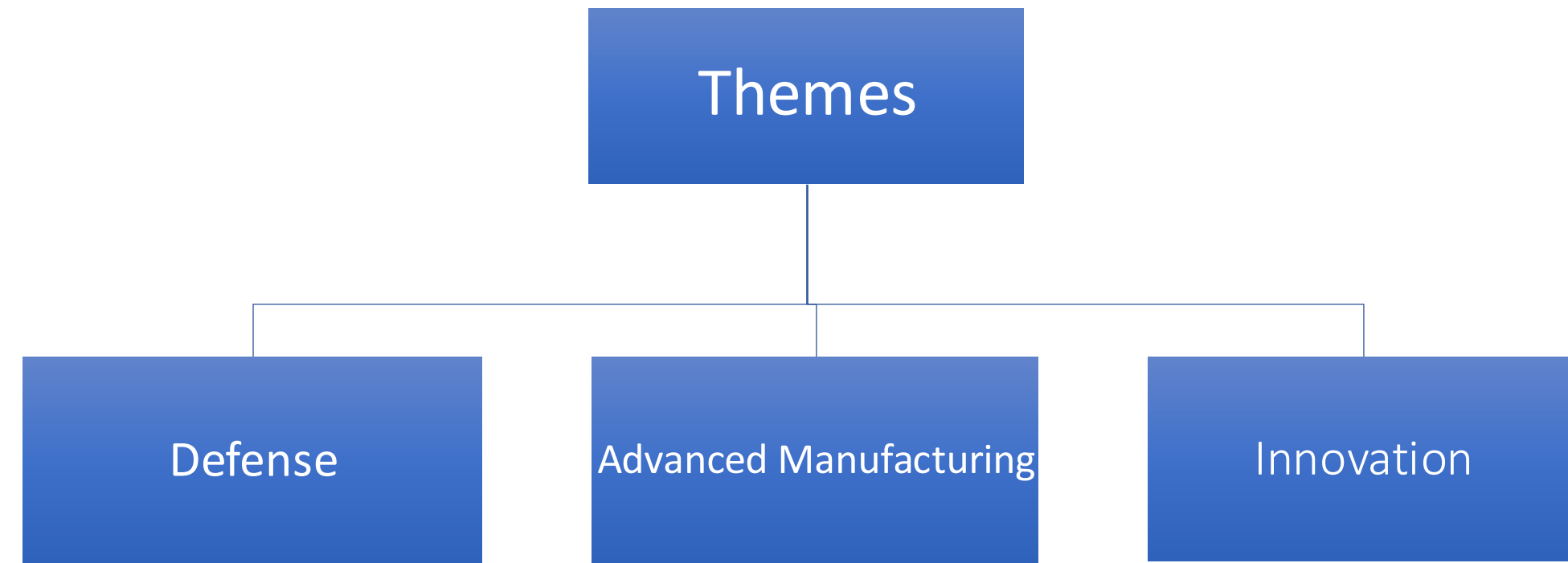
*Plug and Play*

## Tactics

New Business Attraction

Business Retention/ Expansion

Innovation Ecosystem



Target Industry Sectors	Special Focus
Life Sciences	Animal, Plant, Human - R&D, Advanced Manufacturing
Semiconductors	R&D, Advanced Manufacturing
Energy Transition	R&D, Advanced Manufacturing
Professional Services	HQ- Domestic and Intl. Companies Digital Technology – AI, IT, Product Development
Aerospace	R&D, Advanced Manufacturing, Test Facilities

### Metrics:

- Enhanced Regional Gross Domestic Product (GDP)
- New Primary Jobs
- New Capital Investment

# MONTHLY UPDATES

Marketing

IBV

Outbound  
Recruitment-

Innovation  
Ecosystem

BRE

Regional  
Initiative

Staffing

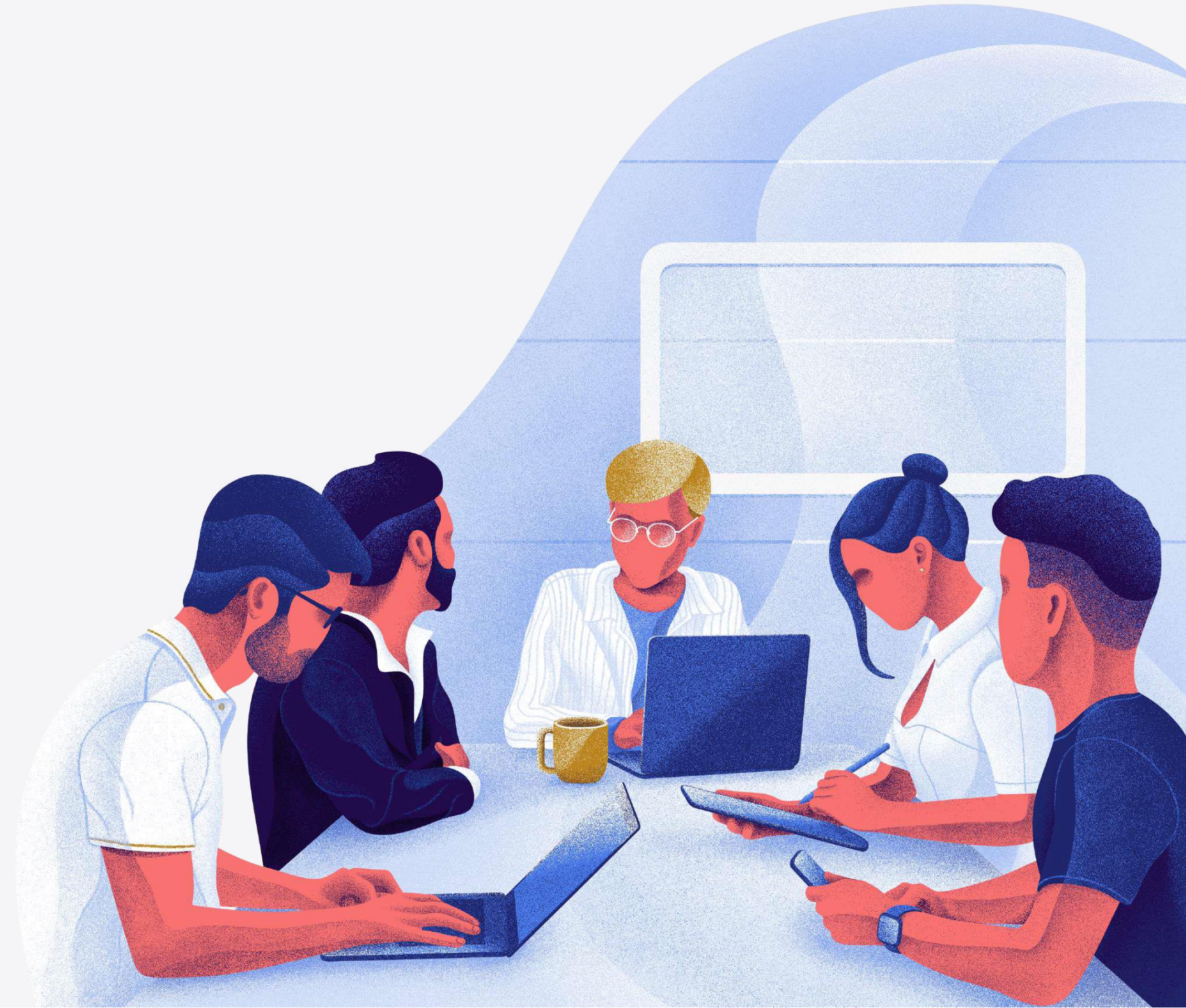


**PLUGANDPLAY**

---

## Mission

**To drive innovation  
by connecting  
entrepreneurs,  
corporations,  
investors and  
governments  
worldwide.**



---

## Our Beginnings: The “Lucky Building”



Google

logitech

 PayPal

DANGER

---

## Our innovation platform.

### ACCELERATOR PROGRAMS

We run over 65 accelerator programs annually in most major industries and cities

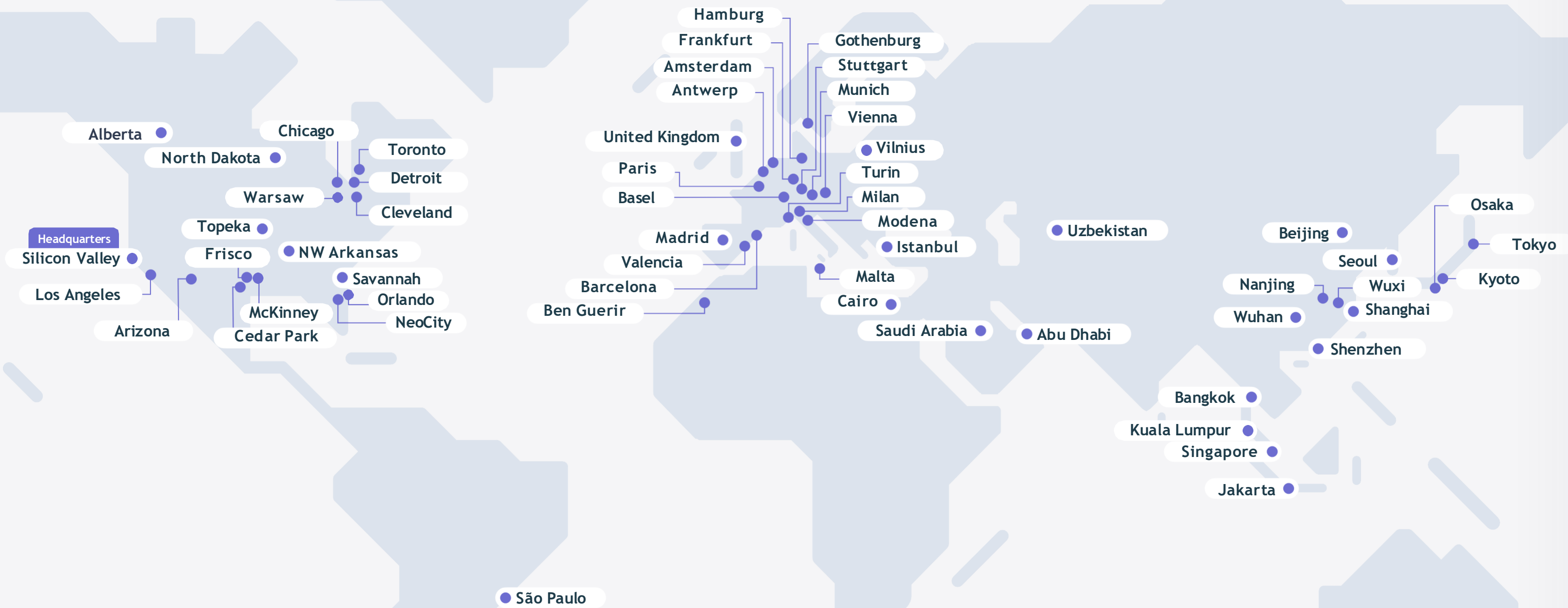
### CORPORATE INNOVATION

We supercharge the innovation of over 600 major corporations from every continent

### VENTURE CAPITAL

We invest in over 250 companies worldwide every year and co-invest with 200 VCs

# We help you build your global reach



## AMERICAS

- Silicon Valley
- Headquarters
- Alberta
- Arizona
- Chicago
- Cedar Park
- Cleveland
- Detroit
- Frisco
- Los Angeles
- McKinney
- North Dakota
- NeoCity
- NW Arkansas
- Orlando
- Savannah
- São Paulo
- Topeka
- Toronto
- Warsaw

## EMEA

- Abu Dhabi
- Amsterdam
- Antwerp
- Barcelona
- Basel
- Ben Guerir
- Cairo
- Frankfurt
- Gothenburg
- Hamburg
- Istanbul
- Madrid
- Malta
- Milan
- Modena
- Munich
- Paris
- Saudi Arabia
- Stuttgart
- Turin
- United Kingdom
- Valencia
- Vienna
- Vilnius

## APAC

- Bangkok
- Beijing
- Jakarta
- Kyoto
- Kuala Lumpur
- Nanjing
- Osaka
- Seoul
- Shanghai
- Shenzhen
- Singapore
- Tokyo
- Uzbekistan
- Wuhan
- Wuxi

JOIN THE PLATFORM  
[PNPTC.COM/JOIN](https://pnptc.com/join)

# Our Unicorns

 PayPal

 LendingClub

 Dropbox

 SoundHound

 Rappi

 GUARDANT

 N26

 Quantenna

 hippo

 honey

 Course Hero

 ApplyBoard

 Kustomer

 BigID

 Flutterwave®

 FiscalNote

 shippo

 Truioo

 Turing

 TRACTABLE

 BLOCKDAEMON

 FLYR

 cloudwalk

 OWKIN

 MANSCAPED

 Truebill

 ESUSU

 visby medical

 FLEXIV

 VESTTOO

---

# Programs



Agtech



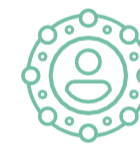
Animal Health



Brand  
& Retail



Energy



Enterprise &  
Cybersecurity



Fintech



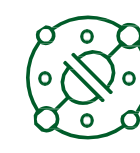
Food &  
Beverage



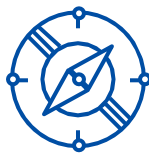
Health



Insurtech



IoT



Maritime



Media & Ad



Mobility



New Materials  
& Packaging



Real Estate  
& Construction



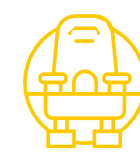
Smart Cities



Supply Chain



Sustainability

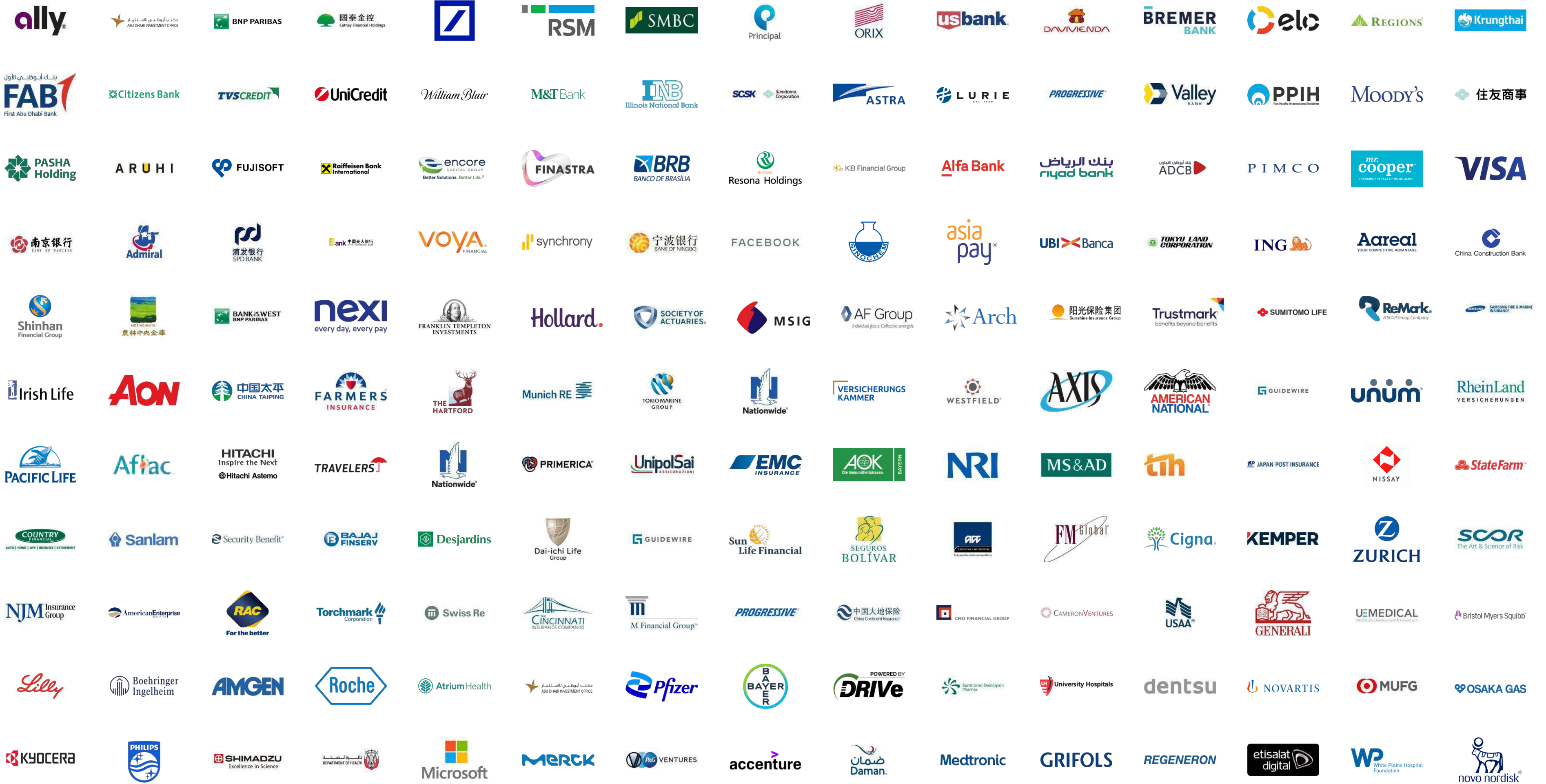


Travel &  
Hospitality



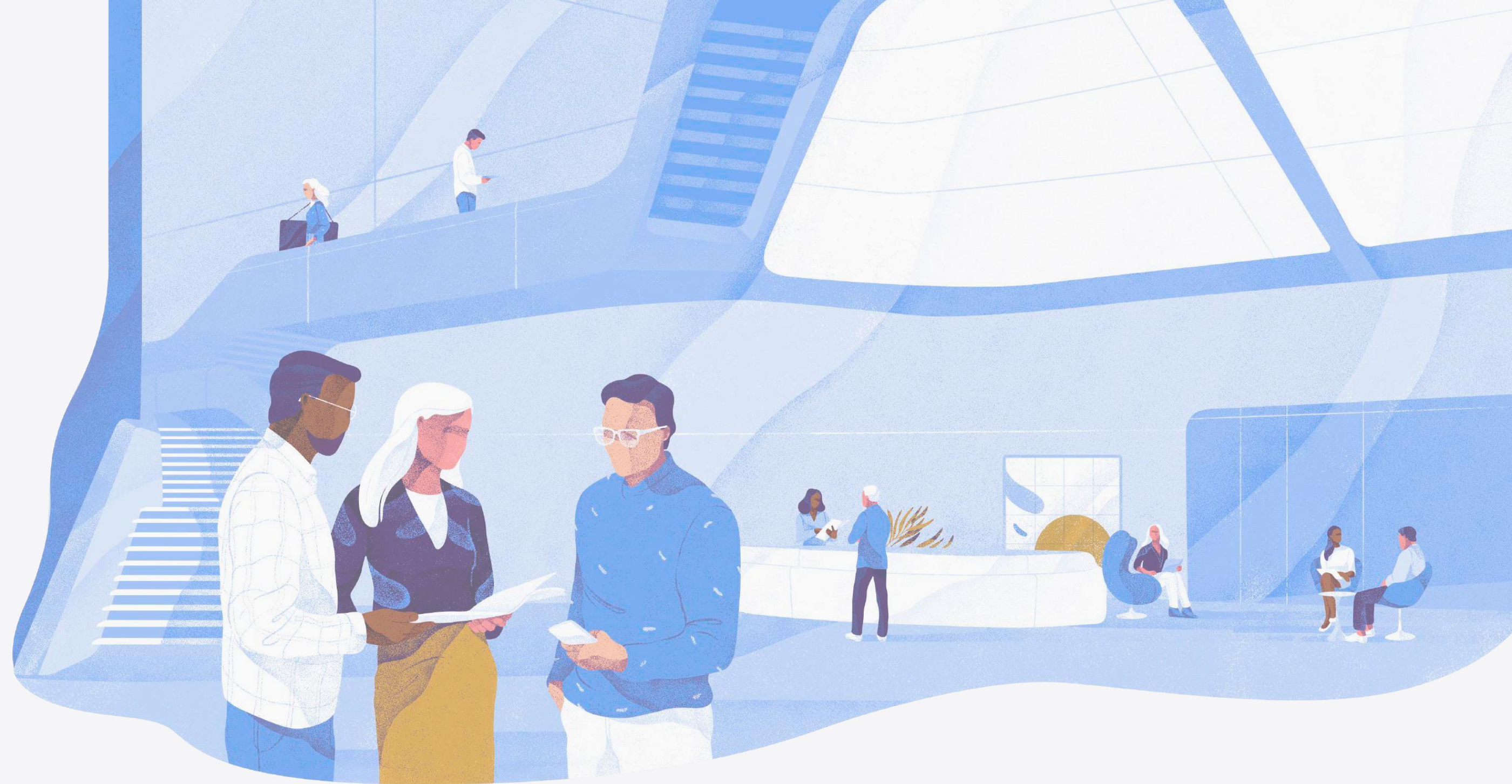
Crypto &  
Digital Assets

# Global Financial Services Ecosystem



---

# Case Studies



## Recent Examples of Private-Public Sector Collaboration

### PLUGANDPLAY ARKANSAS



### PLUGANDPLAY ARIZONA



### PLUGANDPLAY ALBERTA





Deep Dive

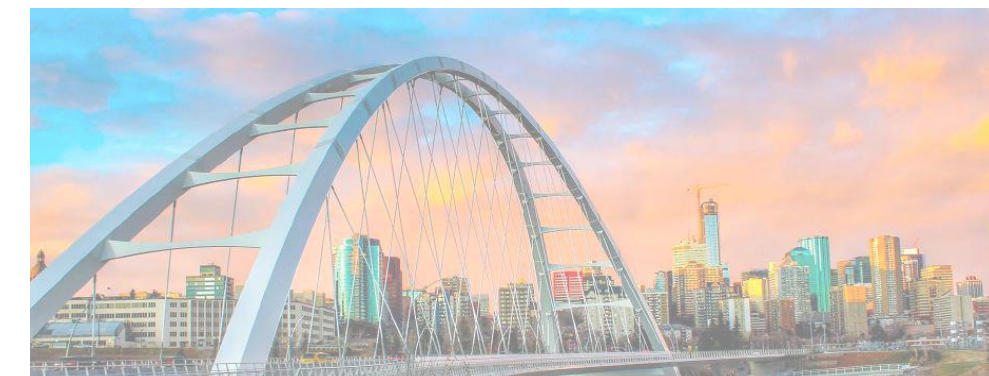
# PLUGANDPLAY ALBERTA



# PLUGANDPLAY ALBERTA

Supercharge innovation across the province, one startup at a time.

Plug and Play built and operates four programs in Alberta. Each program consists of two, three-month accelerator programs annually.



**2**

**CITIES**

**3**

**SECTOR SPECIFIC  
Accelerators**

**8**

**COHORTS  
per year**

**144**

**STARTUPS  
Accelerated  
Since 2022**

**1**

**SECTOR AGNOSTIC  
Accelerator**

2 x Sustainability

2 x Digital Health

2 x Food and Agtech

2 x Sector-Agnostic  
AI/ML

**Team on the Ground**



**Lindsay Smylie**  
Director, Alberta



**Kevin Dahl**  
Director, Alberta



**Niall Kerrigan**  
Senior Corporate  
Partnerships  
Manager



**Kristyn Coons**  
Senior Program  
Manager



**Jacob Grainger**  
Ventures Associate



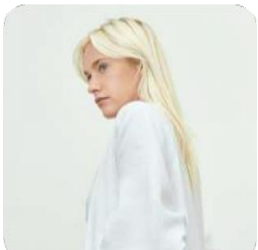
**Katherine Smith**  
Ventures Analyst



**Ismail Khalil**  
Ventures Analyst



**Brady Bailey**  
Program Manager



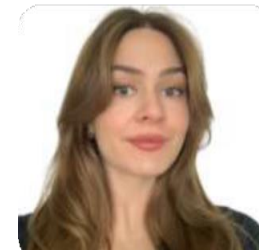
**Nina Hill**  
Corporate  
Partnerships Manager



**Katie  
Greenshields**  
Events Operations  
Manager



**Cameron  
Smithers**  
Program Manager



**Carly Beckman**  
Program Manager



**Bryan Chow**  
Ventures  
Partnerships



**Simona  
Fernandes**  
Ventures Analyst

**Introductions: 2022 & 2023**

2022



2023



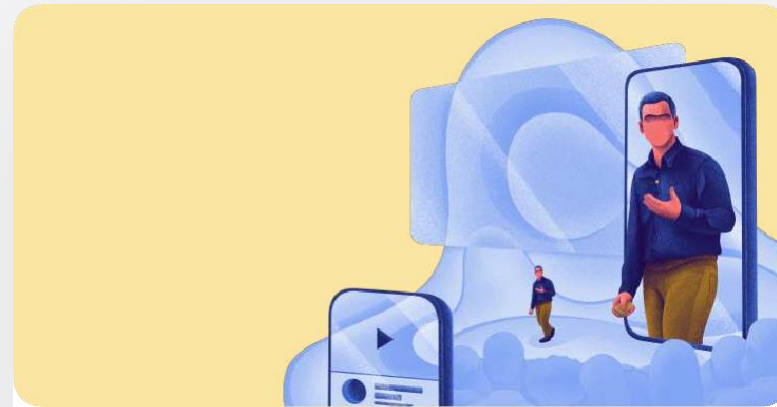


**Impact**



---

## More than an accelerator program



### Program

Boards dictates  
Program Focus Drive  
Selection Process

Connect Public Sector,  
Academia &  
Corporations

DEI and community  
focused elements

Selection Day and EXPO



### Activities

Events

Focus Weeks

Workshops

Career Fair

Community-  
engagement

Hackathon



### Services

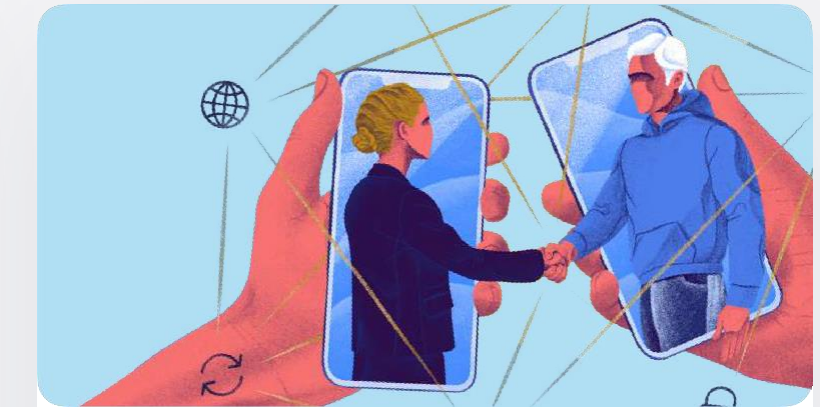
Dealflow Sessions

Reverse Dealflows

Office Hours

Deep Dives

Innovation Days



### Executive Network

Corporate innovation  
best practices  
seminars

Roundtable dinners

Exclusive themed pitch  
events



**BRAZOS VALLEY**  
ECONOMIC DEVELOPMENT  
CORPORATION

**NEXT STEPS**

# Thank You



**BRAZOS VALLEY**  
ECONOMIC DEVELOPMENT  
CORPORATION