



Solid Waste Rate & Feasibility Study

COLLEGE STATION, TX
JUNE 12, 2025



Agenda

01 // METHODOLOGY

02 // COST OF SERVICE

03 // SINGLE-FAMILY RESIDENTIAL

04 // MULTI-FAMILY RESIDENTIAL

05 // COMMERCIAL FRONT LOAD

06 // ROLL-OFF

07 // RATE RECOMMENDATIONS

08 // PROGRAM EXPANSION

Solid Waste Services

The cost of service, rate benchmarking, and proposed rates for each of the following services are identified throughout the presentation:

Single-Family Residential



Multi-Family Residential



Commercial Front Load



Roll-Off

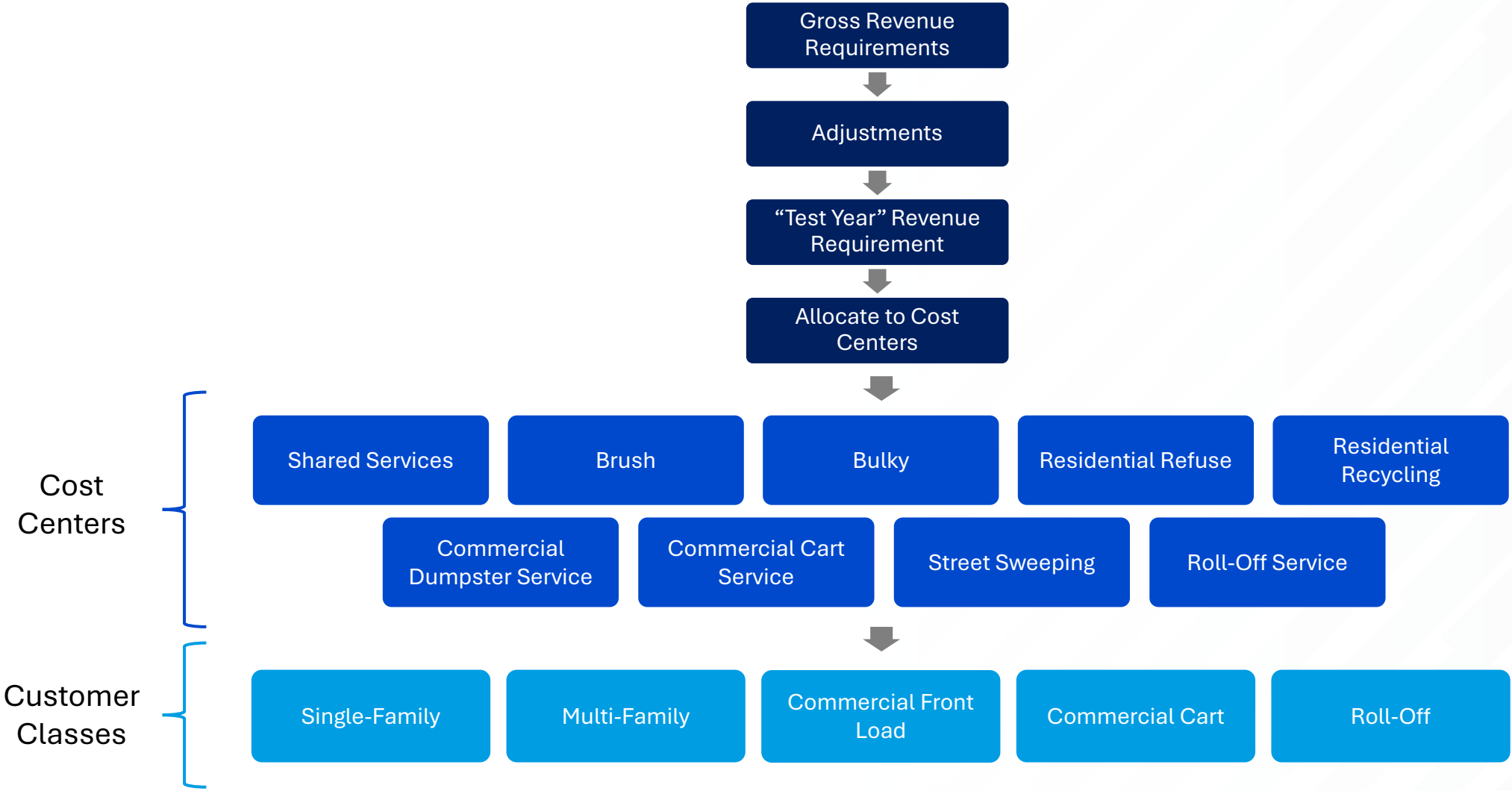


01 // METHODOLOGY

Methodology Overview



Allocation of Costs to Cost Centers



CPI-U & CPI-G&T Comparison

- The City's current residential solid waste rate is **\$20.25**
- Since October 2019, the City's solid waste rates have been indexed to the annual change in the Consumer Price Index (CPI-U)
 - **CPI-U**: average change in the price of a basket of goods purchased by American consumers
- The Garbage and Trash Index (CPI-G&T) has increased at a higher rate than the CPI-U
 - **CPI-G&T**: average change in the price of garbage and trash collection in the United States

	CPI-U	CPI-G&T
Cumulative Increase (2019 – 2025)	27.52%	33.74%

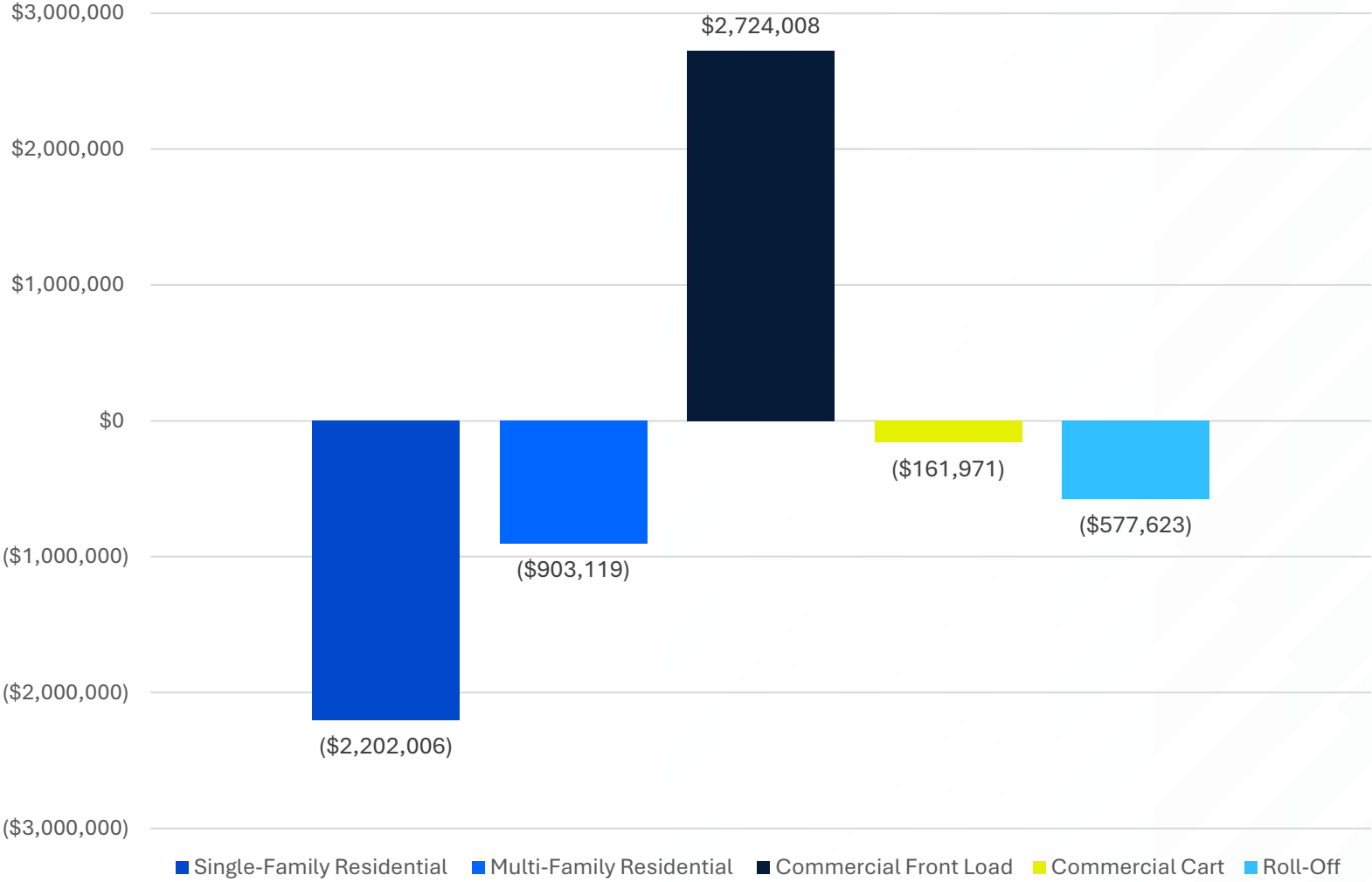
Proposed Rate Recommendations

- Instead of indexing rates to annual increase in CPI-U, index to CPI-G&T
- Implement targeted rate increases for Single-Family, Multi-Family, and Roll-Off rates in FY 2026

Customer Class	FY 2026	FY 2027	FY 2028	FY 2029
Single-Family Residential	CPI-G&T + 5%	CPI-G&T	CPI-G&T	CPI-G&T
Multi-Family Residential	CPI-G&T + 5%	CPI-G&T	CPI-G&T	CPI-G&T
Commercial Services	CPI-G&T	CPI-G&T	CPI-G&T	CPI-G&T
Roll-Off	CPI-G&T + 5%	CPI-G&T	CPI-G&T	CPI-G&T

02 // COST OF SERVICE

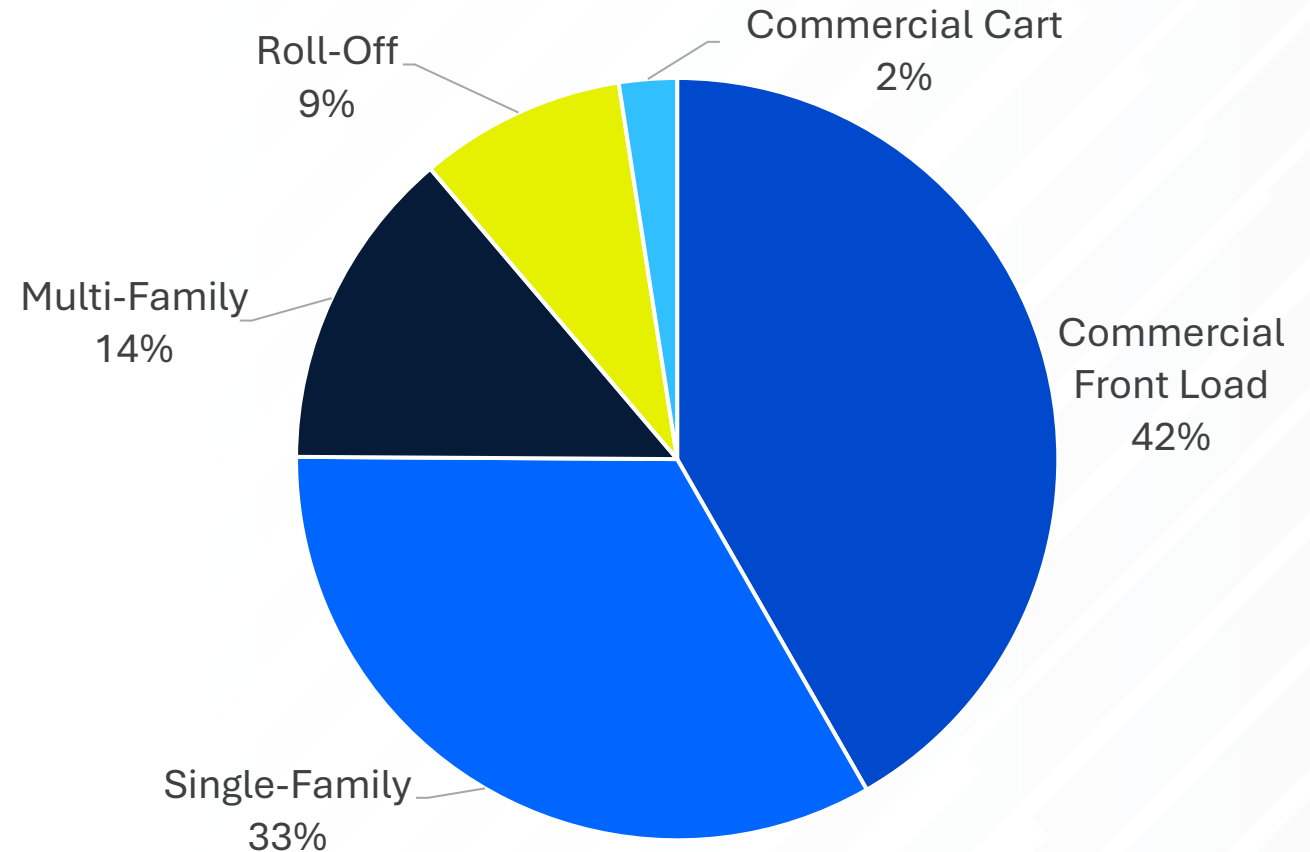
FY 2026 Net Revenue by Customer Class



FY 2026 Commercial Revenue Subsidizing Services

Of the \$4.7 million in revenue generated by Commercial Front Load services:

- 42% needed to cover revenue requirement
- 33% allocated towards Single-Family Residential services



*Percentages calculated on a proportional basis.

03 // SINGLE-FAMILY RESIDENTIAL

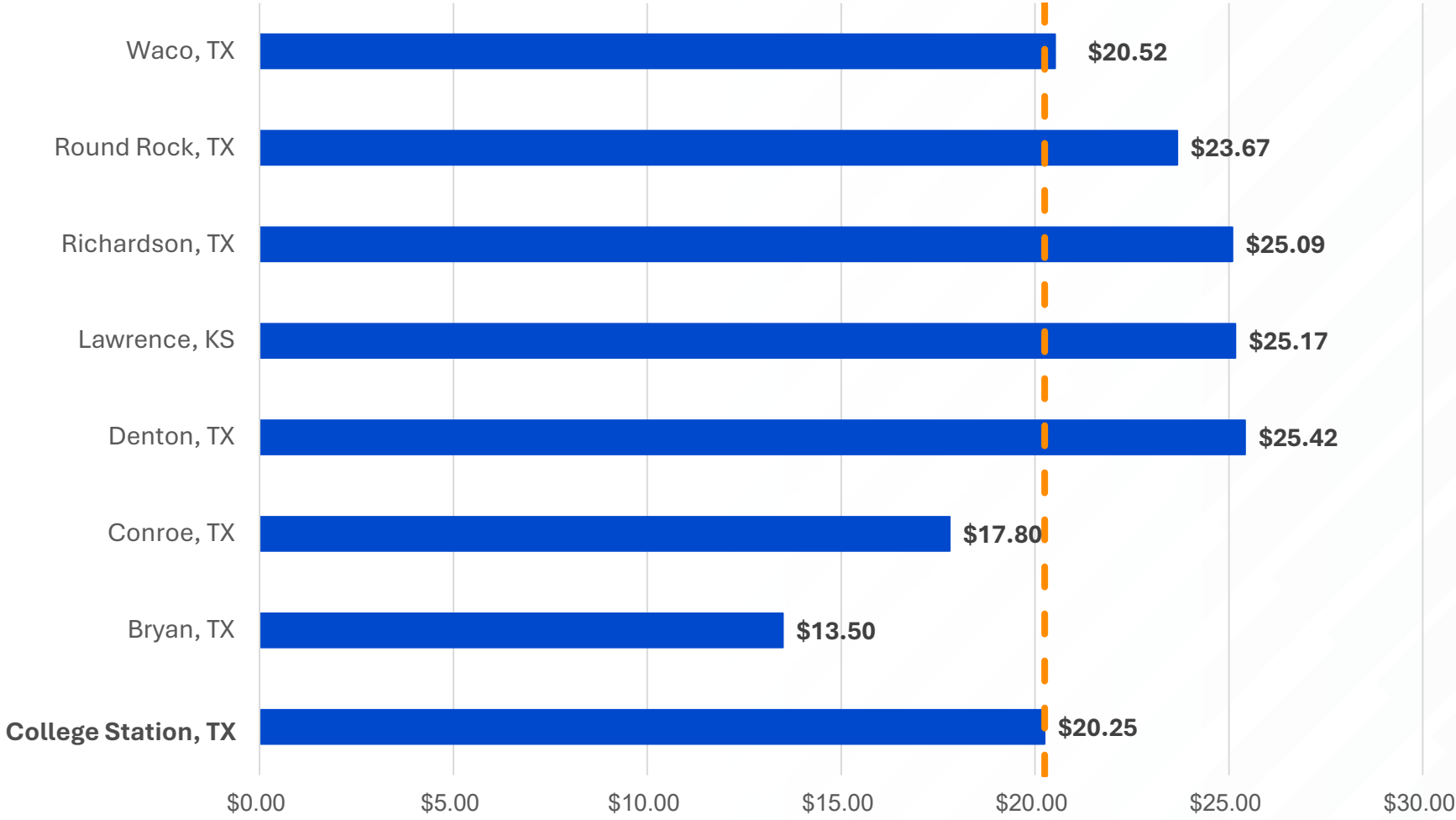
Forecasted Single-Family Cost per Household Per Month

Cost Center	FY 2026
Total Single-Family Cost of Service	\$9,580,199
Projected Number of Households	26,832
Residential Refuse	\$7.15
Residential Recycling	\$5.10
Brush	\$4.64
Bulky	\$4.64
Street Sweeping	\$1.60
Shared Services	\$6.87
Investment Income	(\$0.24)
Single-Family Cost per Household	\$29.75

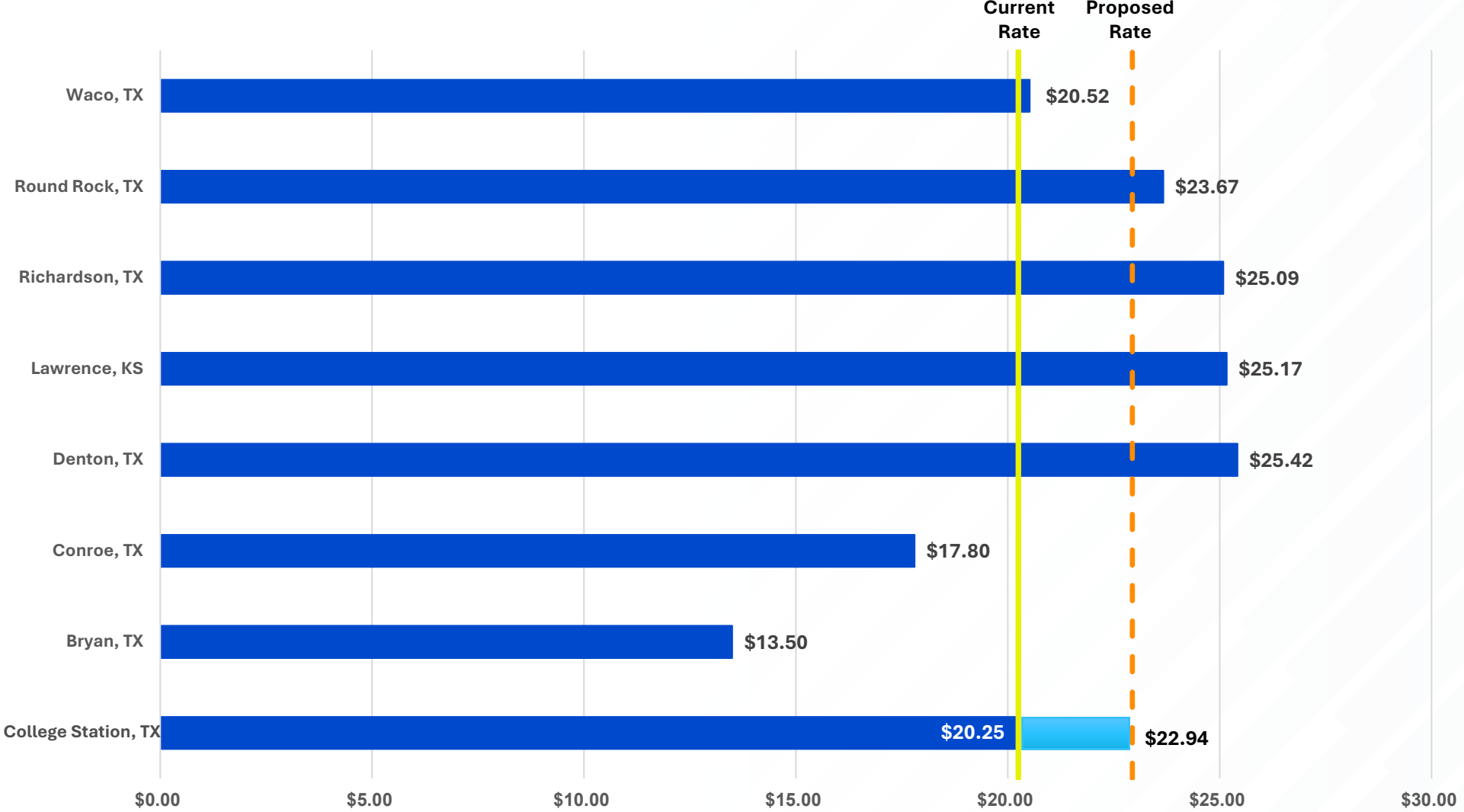
Current Rate: \$20.25

Cost per Household: \$29.75

Single-Family Residential Base Rate Benchmarking



Proposed FY 2026 Single-Family Rate Remains Competitive



04 // MULTI-FAMILY RESIDENTIAL

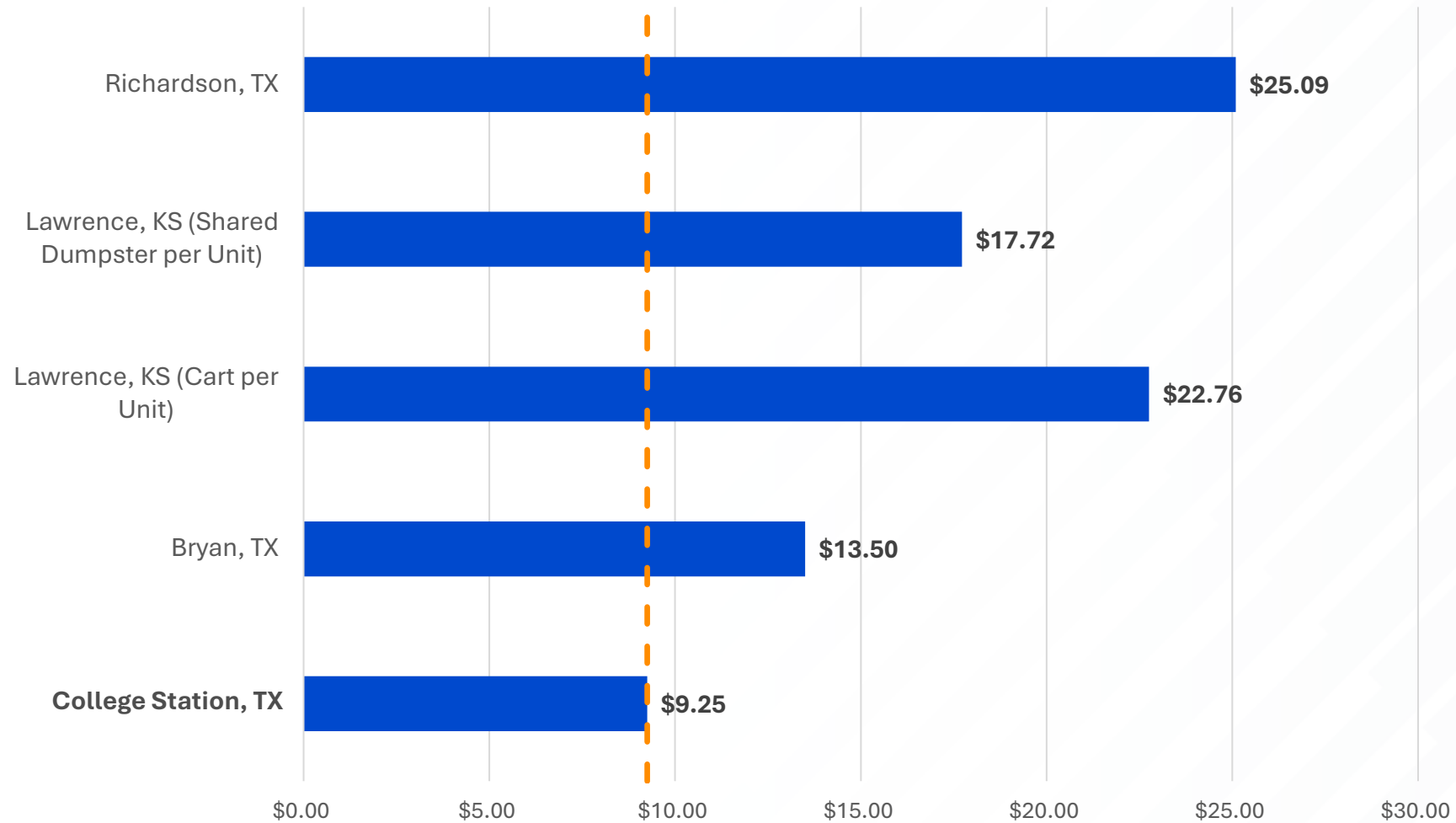
Forecasted Multi-Family Cost per Household Per Month

Cost Center	FY 2026
Total Multi-Family Cost of Service	\$2,212,271
Projected Number of Households	11,451
Commercial Dumpster Service	\$6.36
Commercial Cart Service	\$5.22
Brush	\$0.47
Bulky	\$0.47
Shared Services	\$3.57
Multi-Family Cost per Household	\$16.10

Current Rate: \$9.25

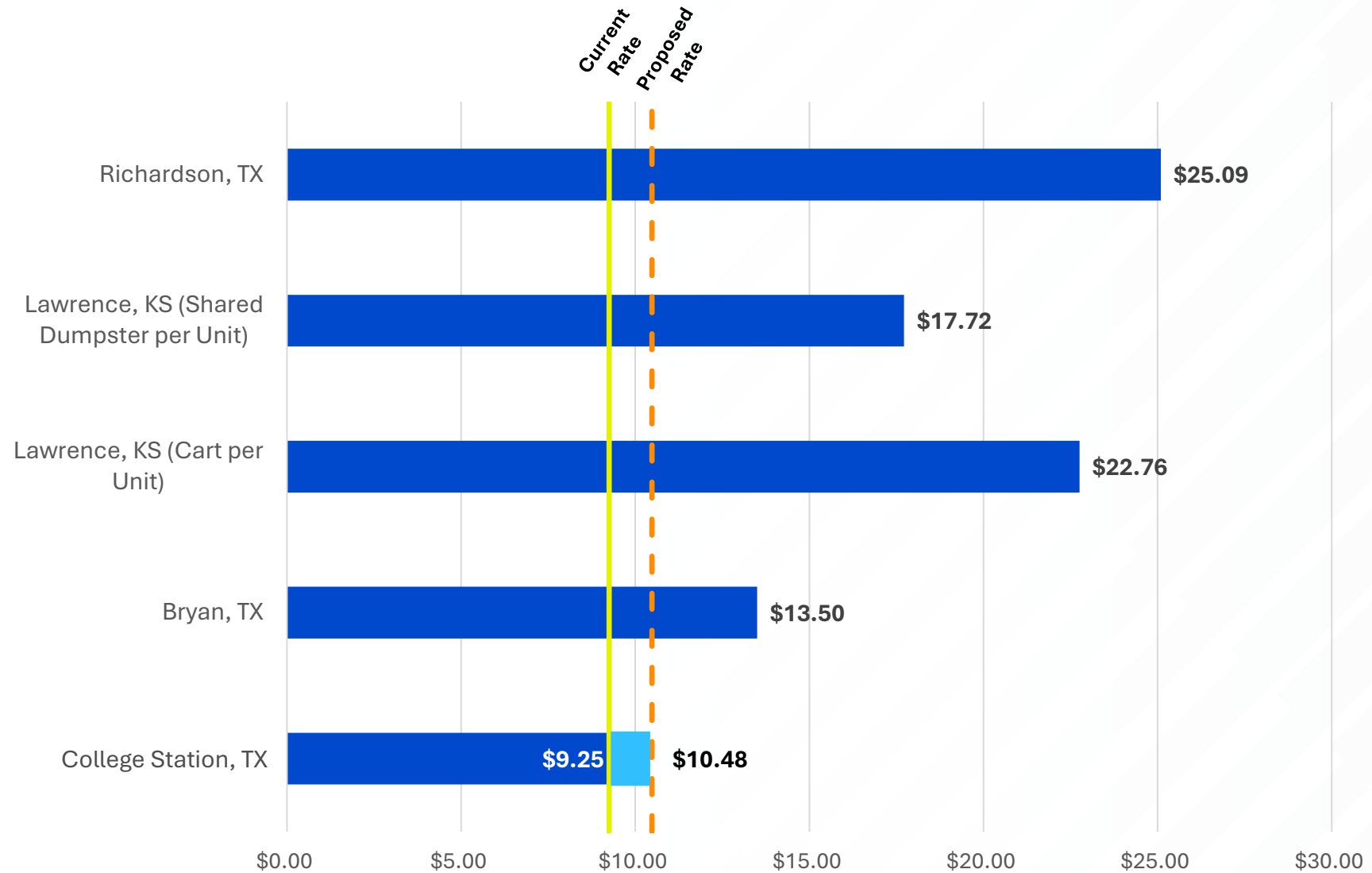
Cost per Household: \$16.10

Multi-Family Residential Base Rate Benchmarking



*Recycling services are not provided to multifamily complexes by any of the benchmarked cities.

Proposed FY 2026 Multi-Family Rate Remains Competitive



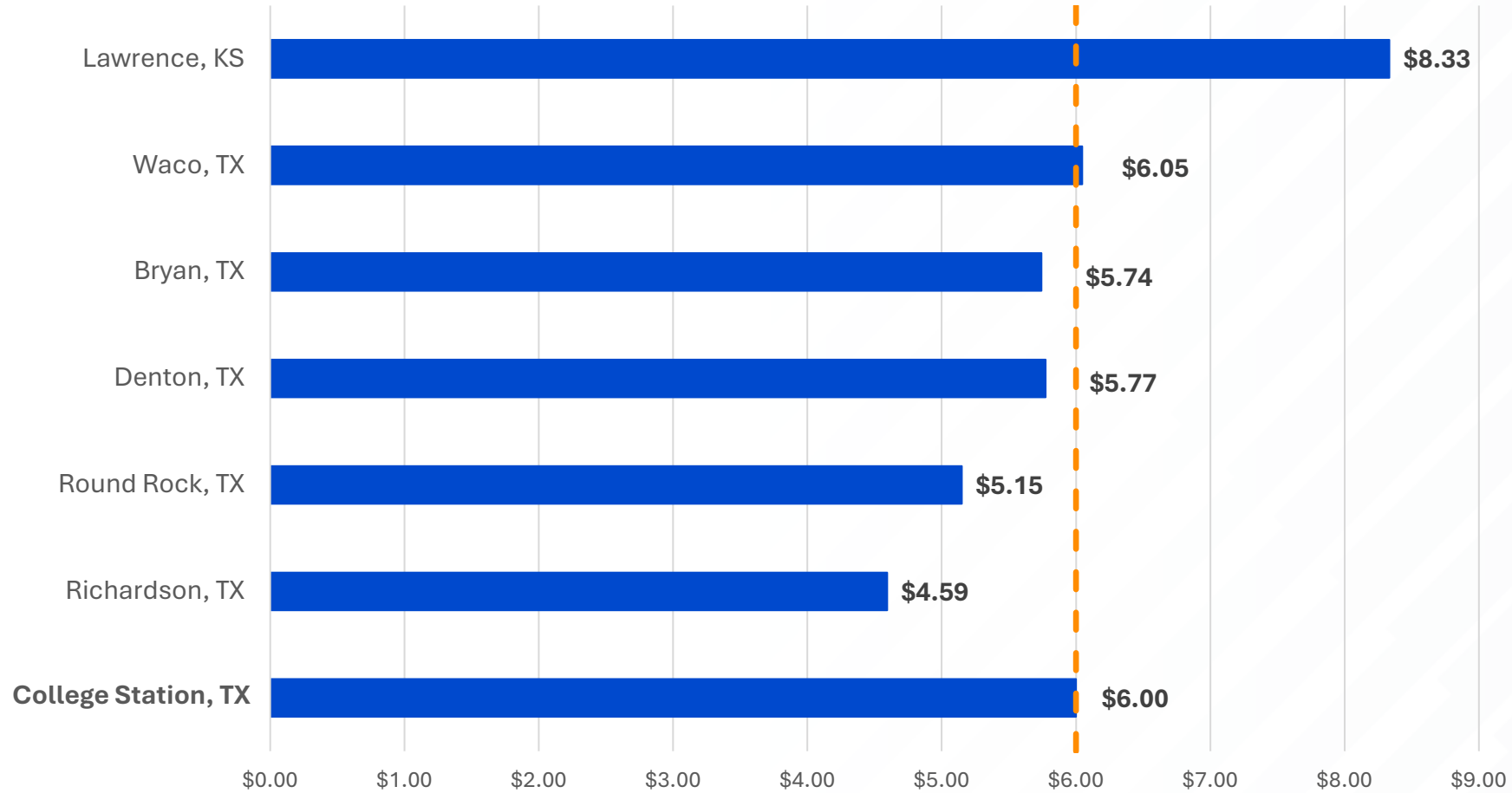
05 // COMMERCIAL FRONT LOAD

Forecasted Commercial Front Load Collection & Disposal Cost

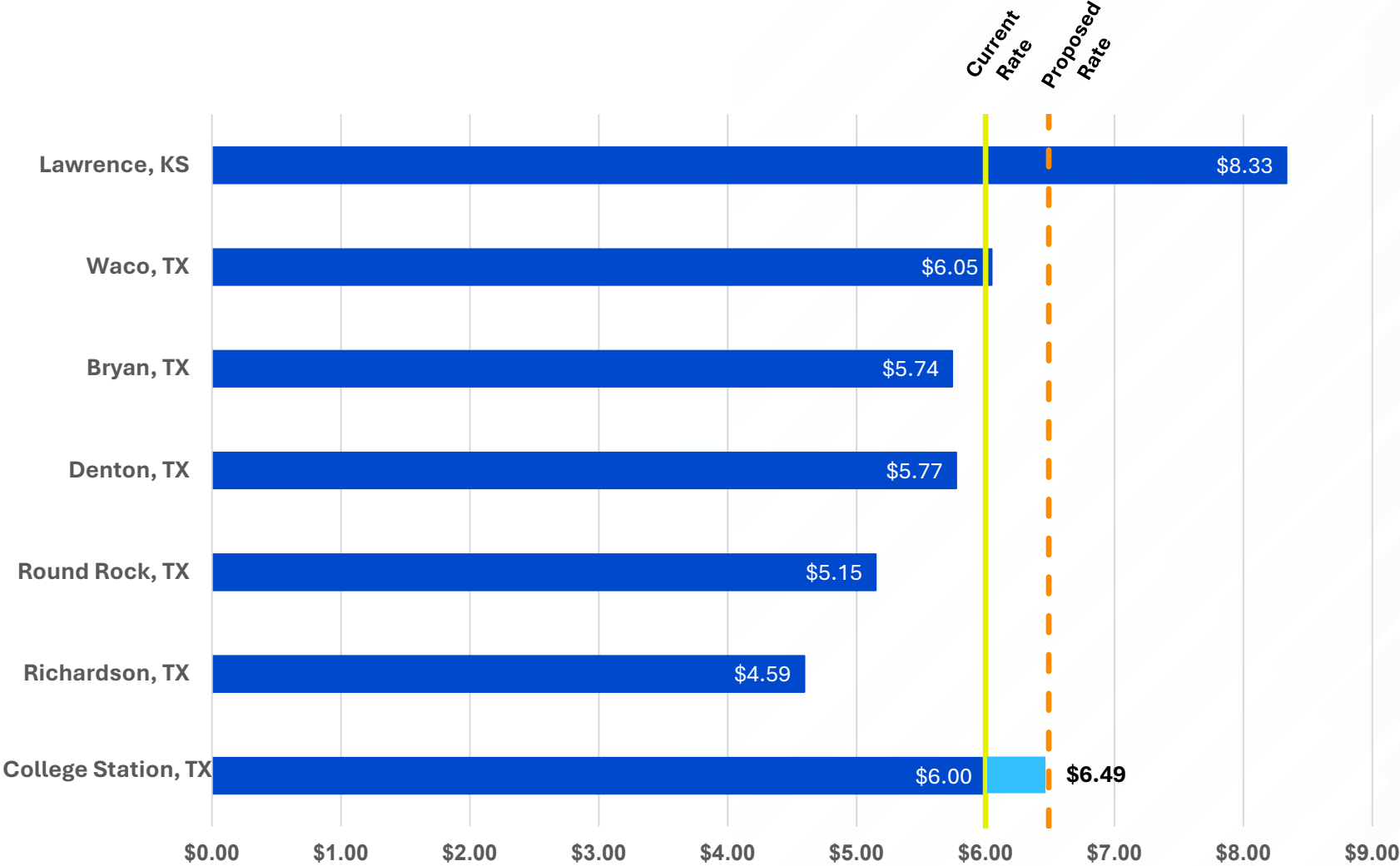
Cost Center	FY 2026
Total Commercial Front Load Cost of Service	\$1,949,201
Annual Collection Cost	\$1,473,958
Annual Collections	122,971
Cost per Collection	\$15.85
Annual Disposal Cost	\$475,243
Annual Disposal Capacity	985,067
Disposal Cost per CY	\$0.48

The City is over-recovering the cost of providing commercial services

Commercial Dumpster Rates per CY Benchmarking



Proposed FY 2026 Commercial Dumpster Rate Remains Competitive



06 // ROLL-OFF

Roll-Off Cost of Service

Cost Center	FY 2026
Total Roll-Off Cost of Service	\$974,977
Pulls per Year	2,204
Total Cost per Pull	\$442

Current Rates		FY 2025
Service Per Load Fee		\$223.00
Delivery Fee		\$48.25
Daily Rental Fee		
	20 CY	\$5.00
	30 CY	\$5.25
	40 CY	\$5.50

Roll-Off Fee Benchmarking

City	20 CY	30 CY	40 CY
Service per Load Fee			
College Station, TX	\$223.00	\$223.00	\$223.00
Lawrence, KS ³	\$216.81	\$288.52	\$312.52
Richardson, TX	\$319.00	\$352.00	\$376.00
Round Rock, TX	\$421.68	\$518.90	\$557.14
Waco, TX ¹	\$308.74	\$393.60	\$520.99
Delivery Fee			
College Station, TX	\$48.25	\$48.25	\$48.25
Lawrence, KS ³	\$77.53	\$77.53	\$77.53
Richardson, TX	\$75.00	\$75.00	\$75.00
Round Rock, TX	\$81.94	\$81.94	\$81.94
Waco, TX	N/A	N/A	N/A
Daily Rental Fee			
College Station, TX	\$5.00	\$5.25	\$5.50
Lawrence, KS ^{2,3}	\$4.41	\$5.14	\$5.14
Richardson, TX	\$5.47	\$5.70	\$6.20
Round Rock, TX	N/A	N/A	N/A
Waco, TX	N/A	N/A	N/A

1. Delivery and rental fees included in service charge in Waco, TX.

2. Minimum rental in Lawrence, KS is one month.

3. The City of Lawrence's roll-off rates do not include the cost of disposal.

FY 2026 Proposed Roll-Off Rates Remain Competitive

City	20 CY	30 CY	40 CY
Service per Load Fee			
College Station, TX	\$223.00	\$223.00	\$223.00
2026 Proposed Rates	\$252.66	\$252.66	\$252.66
Lawrence, KS ³	\$216.81	\$288.52	\$312.52
Richardson, TX	\$319.00	\$352.00	\$376.00
Round Rock, TX	\$421.68	\$518.90	\$557.14
Waco, TX ¹	\$308.74	\$393.60	\$520.99
Delivery Fee			
College Station, TX	\$48.25	\$48.25	\$48.25
2026 Proposed Rates	\$54.67	\$54.67	\$54.67
Lawrence, KS ³	\$77.53	\$77.53	\$77.53
Richardson, TX	\$75.00	\$75.00	\$75.00
Round Rock, TX	\$81.94	\$81.94	\$81.94
Waco, TX	N/A	N/A	N/A
Daily Rental Fee			
College Station, TX	\$5.00	\$5.25	\$5.50
2026 Proposed Rates	\$5.67	\$5.95	\$6.23
Lawrence, KS ^{2,3}	\$4.41	\$5.14	\$5.14
Richardson, TX	\$5.47	\$5.70	\$6.20
Round Rock, TX	N/A	N/A	N/A
Waco, TX	N/A	N/A	N/A

1. Delivery and rental fees included in service charge in Waco, TX.

2. Minimum rental in Lawrence, KS is one month.

3. The City of Lawrence's roll-off rates do not include the cost of disposal.

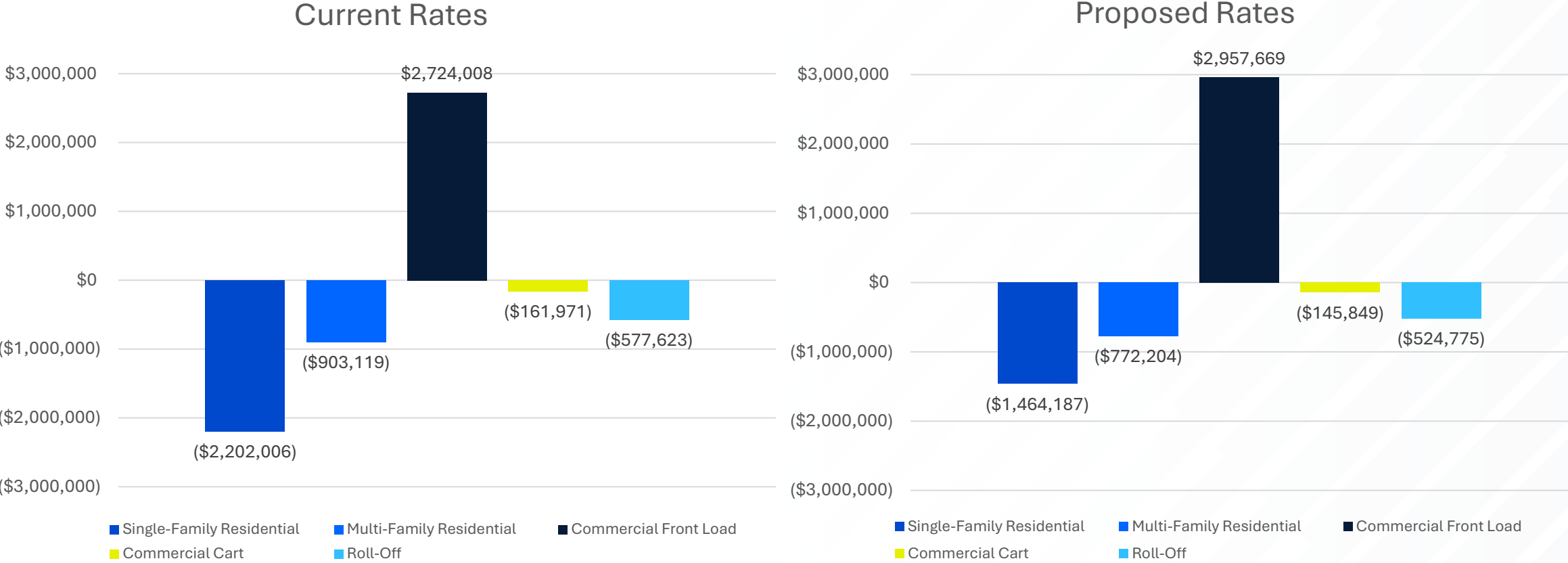
07 // RATE RECOMMENDATIONS

Proposed Rate Recommendations

- Instead of indexing rates to annual increase in CPI-U, index to CPI-G&T
- Implement targeted rate increases for Single-Family, Multi-Family, and Roll-Off rates in FY 2026

Customer Class	FY 2026	FY 2027	FY 2028	FY 2029
Single-Family Residential	CPI-G&T + 5%	CPI-G&T	CPI-G&T	CPI-G&T
Multi-Family Residential	CPI-G&T + 5%	CPI-G&T	CPI-G&T	CPI-G&T
Commercial Services	CPI-G&T	CPI-G&T	CPI-G&T	CPI-G&T
Roll-Off	CPI-G&T + 5%	CPI-G&T	CPI-G&T	CPI-G&T

FY 2026 Net Revenue from Current and Proposed Rates by Customer Class



08 // PROGRAM EXPANSION

Brush and Bulky Item Collection Expansion for Multi-Family and Commercial Properties

- City offers roll-off services but not brush and bulky item collections for multifamily and commercial properties
- Service levels not well aligned with demand, often resulting in move-out trash piling up



City-Operated Brush and Bulky Collection Routes

Multi-Family	On-Call Pickup	Weekly Pickup	Bi-Weekly Pickup	Monthly Pickup
Routes Required	0.3	6.0	3.0	2.0
Total Route Cost per Year	\$65,277	\$1,216,274	\$608,137	\$405,425
Cost per Multi-Family Properties per Month	\$259.04	\$896.96	\$448.48	\$298.99
Cost per Resident per Month	\$2.33	\$8.08	\$4.04	\$2.69

Commercial	On-Call Pickup	Weekly Pickup	Bi-Weekly Pickup	Monthly Pickup
Routes Required	0.3	9.0	5.0	3.0
Total Route Cost per Year	\$57,267	\$1,824,412	\$1,013,562	\$608,137
Cost per Property per Month	\$227.25	\$350.31	\$194.62	\$116.77

Private-Sector & City-Operated Multi-Family Brush & Bulk Cost Comparison

Service	Annual Cost
Private-Sector Collection (Peak Demand, One Route)	\$304,149
Private-Sector Collection (Peak Demand, Two Routes)	\$608,297
City-Operated Collection (Monthly Service)	\$405,425



Thank You

Proposed Rate Recommendations

- Instead of indexing rates to annual increase in CPI-U, index to CPI-G&T
- Implement targeted rate increases for Single-Family, Multi-Family, and Roll-Off rates in FY 2026

Customer Class	FY 2026	FY 2027	FY 2028	FY 2029
Single-Family Residential	CPI-G&T + 5%	CPI-G&T	CPI-G&T	CPI-G&T
Multi-Family Residential	CPI-G&T + 5%	CPI-G&T	CPI-G&T	CPI-G&T
Commercial Services	CPI-G&T	CPI-G&T	CPI-G&T	CPI-G&T
Roll-Off	CPI-G&T + 5%	CPI-G&T	CPI-G&T	CPI-G&T