

Restricted Overnight Parking Proposal

City Council Workshop

July 10, 2025

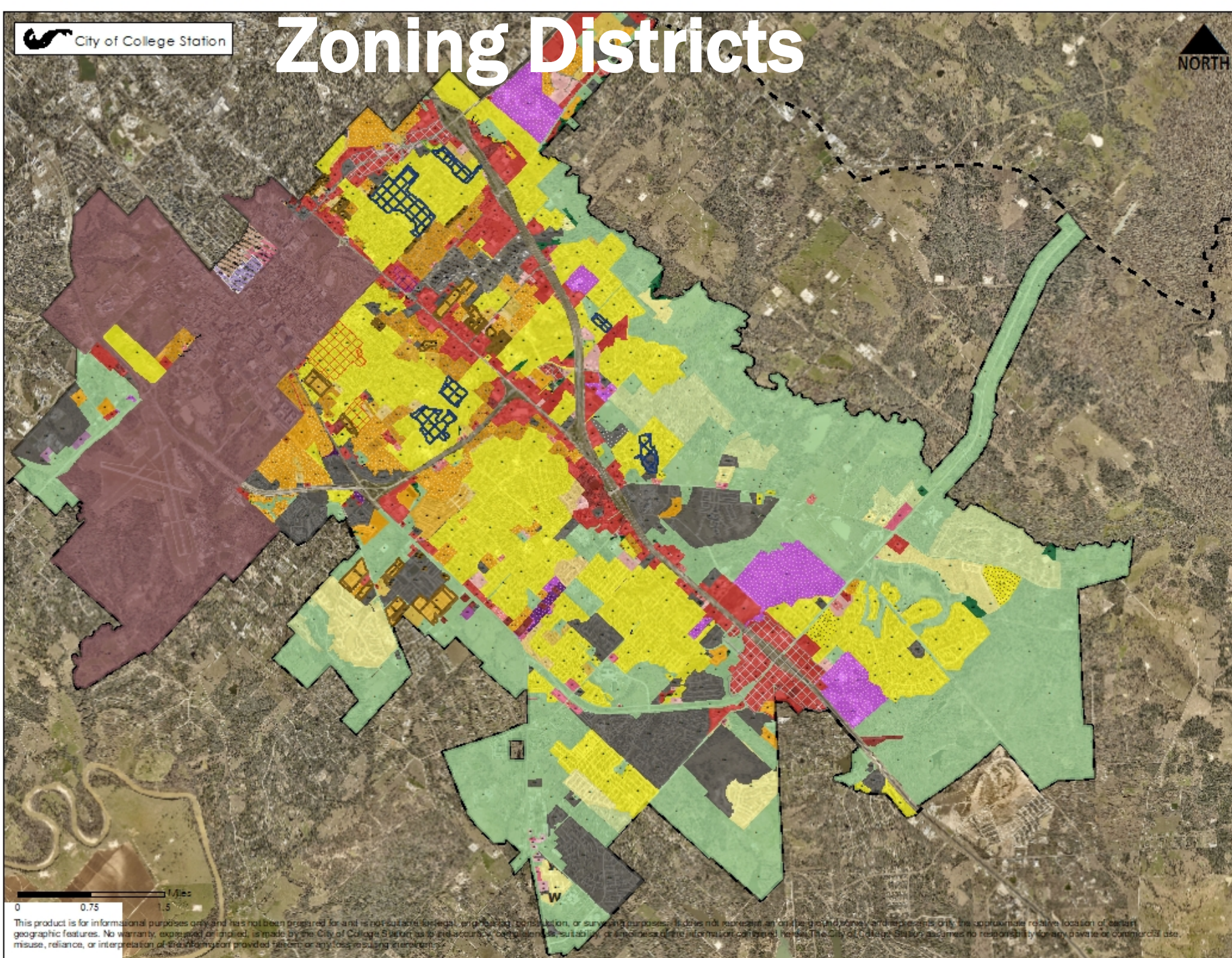


Street Parking Options

- Remove street parking
 - Pedestrian and bicycle safety
 - Limits visitors
- Limit **overnight** street parking (ie: 2am – 5am)
 - Reduces “permanent” parking
 - Limits overnight visitors
- Residential **parking permit** program*
 - Resident benefit
 - Administratively challenging
- Overnight **parking permit** program*
 - Resident benefit
 - Administratively challenging
- Paid parking* or Special Event



Zoning Districts



This product is for informational purposes only and has not been prepared for and is not suitable for legal, engineering, construction, or surveying purposes. It does not represent an official ground survey and represents only the approximate relative location of certain geographic features. No warranty, expressed or implied, is made by the City of College Station as to the accuracy, completeness, suitability, or timeliness of the information contained herein. The City of College Station assumes no responsibility for any damage or commercial use, misuse, reliance, or interpretation of the information provided herein or any loss resulting therefrom.

Neighborhood Conservation



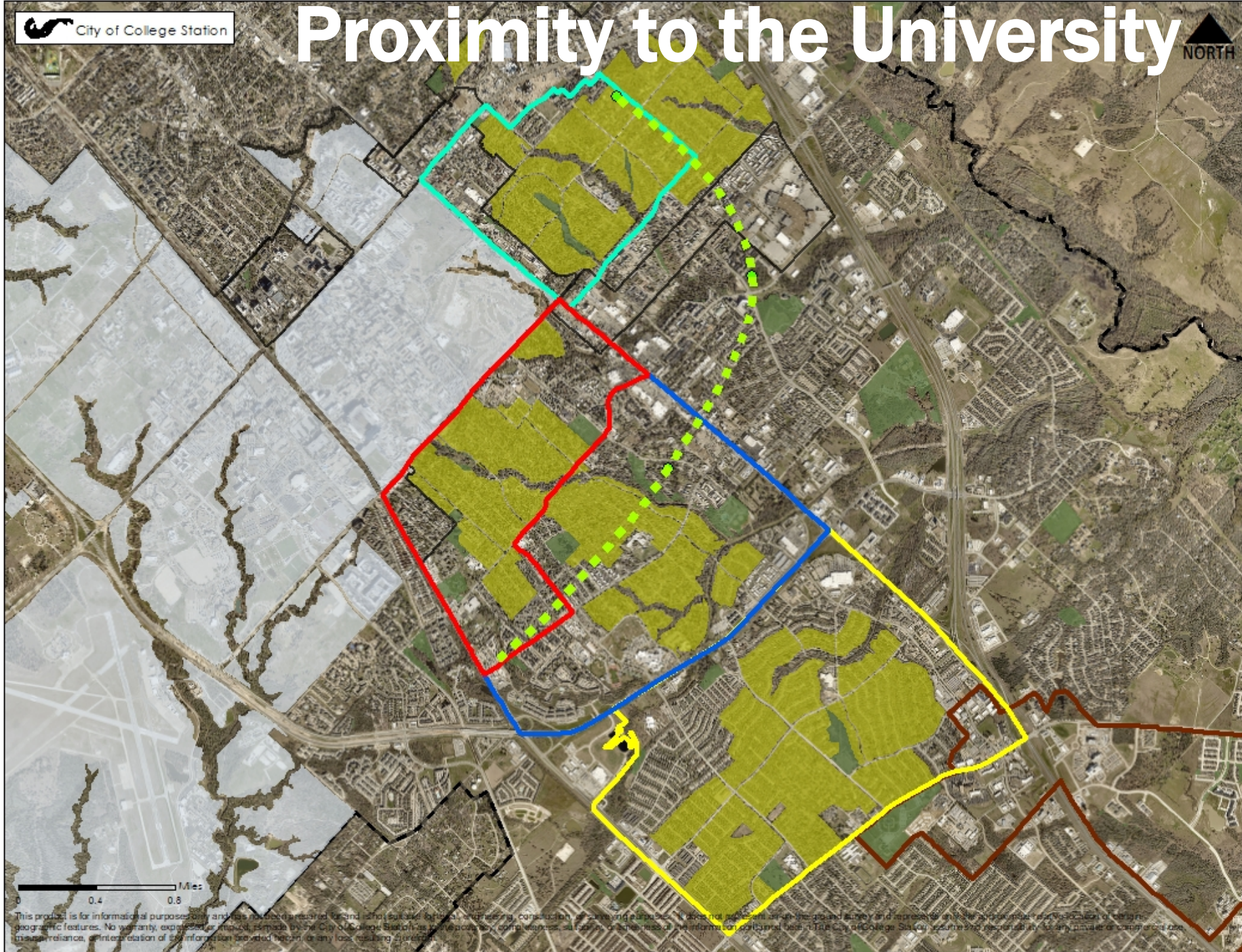
This product is for informational purposes only and has not been prepared for and should not be used for legal, engineering, construction, or planning purposes. It does not represent an on-the-ground survey and represents only the approximate location of certain geographic features. No warranty, expressed or implied, is made by the City of College Station as to the accuracy, completeness, or timeliness of the information or data used to create this product. The City of College Station assumes no responsibility for any errors or omissions, or for any reliance on, or interpretation of, the information provided herein or any loss resulting therefrom.

Neighborhood Plan Areas



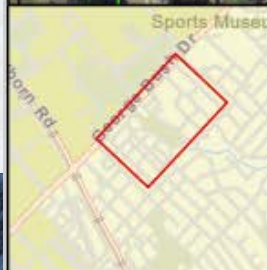
This product is for informational purposes only and has not been prepared for and is not suitable for civil, engineering, construction, or surveying purposes. It does not represent an on-the-ground survey and does not constitute a warranty of any geographic features. No warranty, expressed or implied, is made by the City of College Station as to the accuracy, completeness, suitability, or timeliness of the information contained herein. The City of College Station assumes no responsibility for any private or commercial use, misinterpretation, or interpretation of the information provided herein or any loss resulting therefrom.

Proximity to the University



This product is for informational purposes only and has not been prepared for and is not suitable for civil engineering, construction, or surveying purposes. It does not represent an on-the-ground survey and represents only the best available information. No warranty, expressed or implied, is made by the City of College Station as to the accuracy, completeness, suitability, or timeliness of the information contained here. The City of College Station assumes no responsibility for any private or commercial use, misinterpretation, or interpretation of the information provided herein, or any loss resulting therefrom.

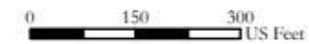
Street by Street



Southside - No Parking North

This product is for informational purposes and may not have been prepared for or be suitable for legal, engineering, or surveying purposes. It does not represent an on-the-ground survey and represents only the approximate relative location of geographic features. No warranty is made by the City of College Station regarding specific accuracy or completeness.

- Street Width Less than 24'
- Street Width 24' to 27'
- Street Width 27' or Greater
- NO PARKING ANY TIME
- NO PARKING ANY TIME - 2 HOURS
- NO PARKING BIKE LANE
- NO PARKING ON PAVEMENT
- NO PARKING PRIVATE DRIVE
- NO PARKING THIS SIDE OF SIGN
- NO PARKING 2 HOURS
- NO PARKING ANYTIME



Considerations

- Full or partial removal
- Time frame
 - ie: 2:00 – 5:00 a.m.
- Defining the area
 - Proximity to the University
 - Comp Plan designation
 - Zoning
 - By neighborhood
 - By street
 - Pilot area
- Special events and Game Days



Engagement Plan

- Timeline
- Public Input
 - Survey
 - Open House
 - Notification
- Outreach and education



