

Parking Removal Policy Amendment

November 24, 2025



CITY OF COLLEGE STATION
Home of Texas A&M University®



Background

- On-Street Parking Concerns
- Overnight parking proposal - Public meeting and survey feedback
- Council direction: dimensional standards to address operational and safety concerns
- Existing Parking Removal Policy and Single-Family Parking Requirements for Platting ordinance



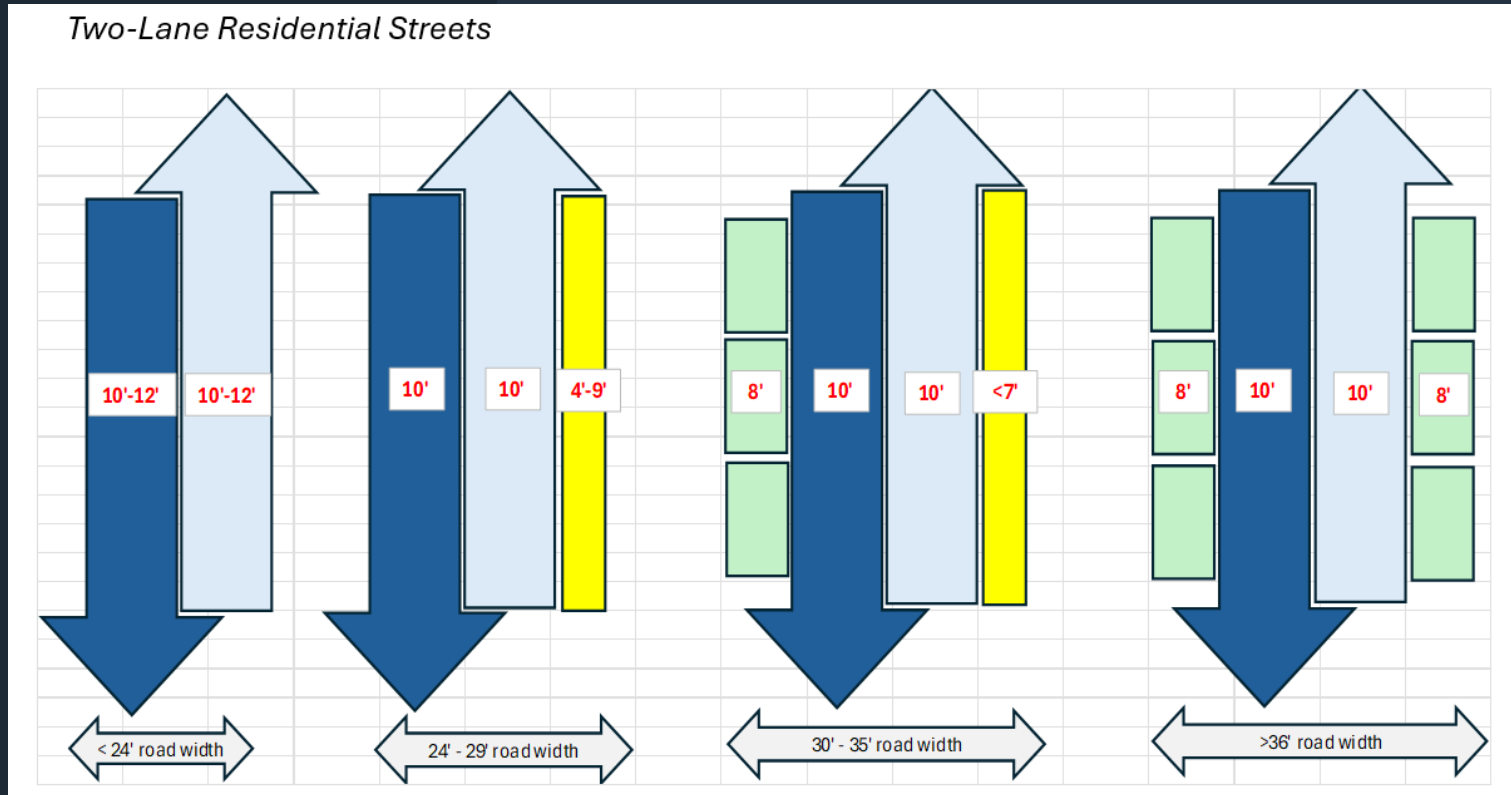
CITY OF COLLEGE STATION
Home of Texas A&M University

Process

- Report & initiation
- Investigation
- Public Safety & Operations
- Design Standards
- Traffic Management Team Recommendation
- Public Meeting
- City Council Action



Operational Considerations



Street Dimensions & Parking Removal

- **Streets under 27' wide.** On-street parking may be removed.
- **Streets 27' and up to 32' wide.** On-street parking may be removed on one side of the street.
- **Streets over 32' and up to 38' wide.** On-street parking is allowed on both sides of the street.
- **Streets over 38' wide and greater.** These are Collector roadways and require bicycle facilities and on-street parking may be removed.
- **Streets less than 38' wide,** but that are designated or constructed as a Collector roadway. These may require bicycle facilities and on-street parking may be removed.





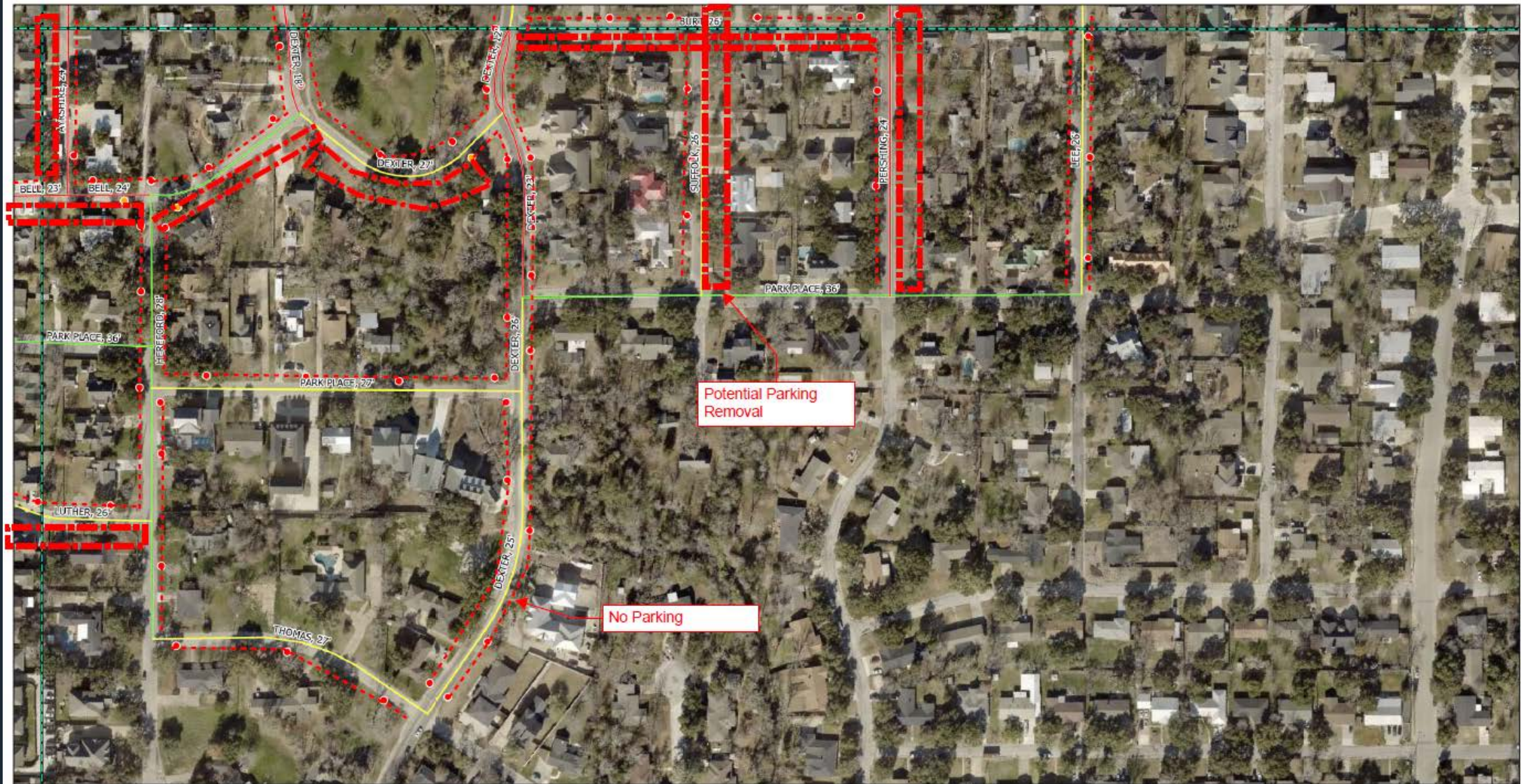
Southside - No Parking North

This product is for informational purposes and may not have been prepared for or be suitable for legal, engineering, or surveying purposes. It does not represent an on-the-ground survey and represents only the approximate relative location of geographic features. No warranty is made by the City of College Station regarding specific accuracy or completeness.

- SIGNTEXT**
- NO PARKING ANY TIME
 - NO PARKING HERE TO CORNER
 - NO PARKING PRIVATE DRIVE
 - NO PARKING THIS SIDE OF SIGN
- Paved Width**
- Width ≤ 24'
 - Width 25' - 27'
 - Width ≥ 28'

Revised
Nov 2025





Potential Parking Removal

No Parking



Southside - No Parking East

This product is for informational purposes and may not have been prepared for or be suitable for legal, engineering, or surveying purposes. It does not represent an on-the-ground survey and represents only the approximate relative location of geographic features. No warranty is made by the City of College Station regarding specific accuracy or completeness.

- SIGNTEXT**
- NO PARKING ANY TIME
 - NO PARKING HERE TO CORNER
 - NO PARKING PRIVATE DRIVE
 - NO PARKING THIS SIDE OF SIGN
- Paved Width**
- Width ≤ 24'
 - Width 25' - 27'
 - Width ≥ 28'

Revised
Nov 2025





Potential Parking Removal

No Parking

Southside - No Parking West

This product is for informational purposes and may not have been prepared for or be suitable for legal, engineering, or surveying purposes. It does not represent an on-the-ground survey and represents only the approximate relative location of geographic features. No warranty is made by the City of College Station regarding specific accuracy or completeness.

- SIGNTEXT**
- NO PARKING ANY TIME
 - NO PARKING HERE TO CORNER
 - NO PARKING PRIVATE DRIVE
 - NO PARKING THIS SIDE OF SIGN
- Paved Width**
- Width ≤ 24'
 - Width 25' - 27'
 - Width > 28'

Revised
Nov 2025

