

Traffic Congestion and Mobility Analysis Overview

City Council

January 22, 2026

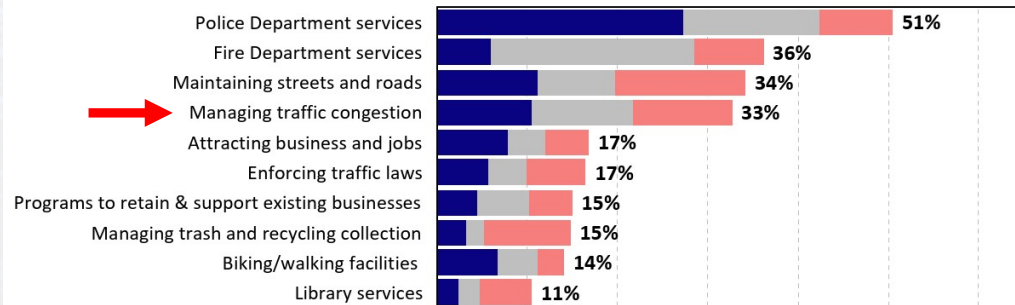


Surveys and Priority

2025 Citizen Survey

Q1a. City Services That Are Most Important to Residents

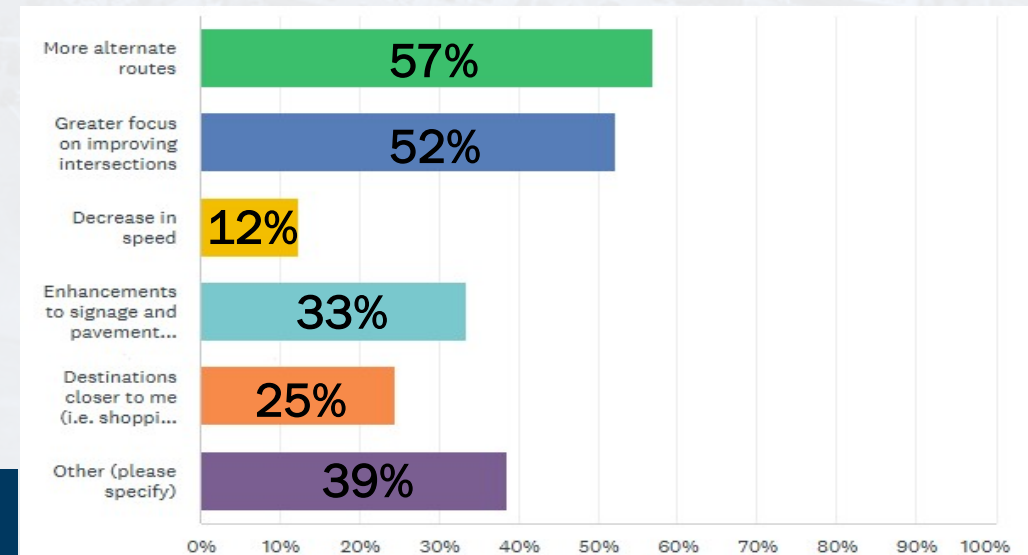
by percentage of respondents who selected the item as one of their top three choices



- Managing traffic congestion has consistently ranked as a high service priority:
 - 2nd in 2019 Citizen Survey
 - 3rd in 2016 Citizen Survey

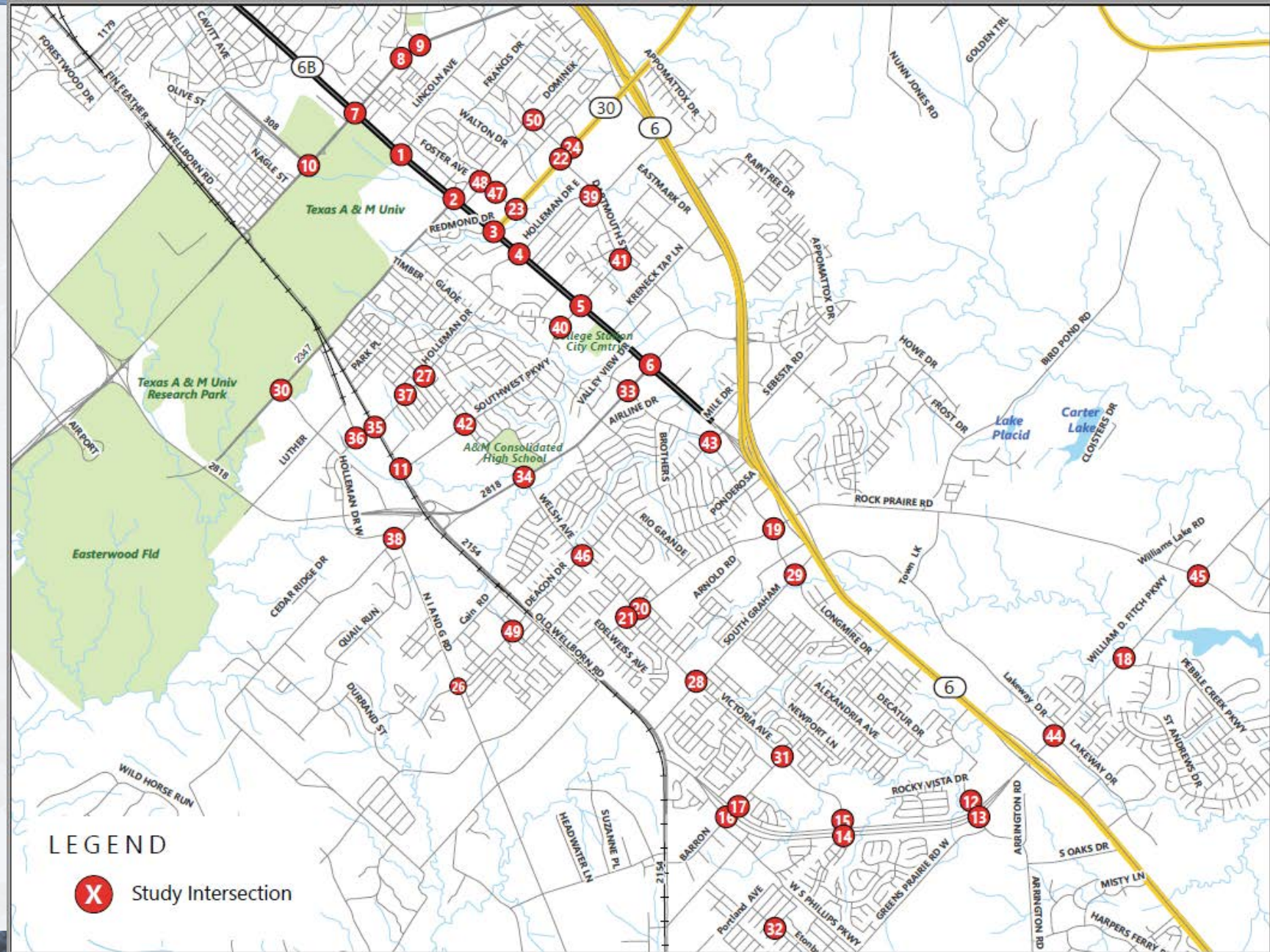
Project Survey (926 responses)

- 86% - responded that driving alone in a car is their primary means of transportation
- 79% - strongly agreed or somewhat agreed they drive to work or school because they felt it is their only feasible option.
- Responded they would like to see these changes to improve traffic flow and safety:

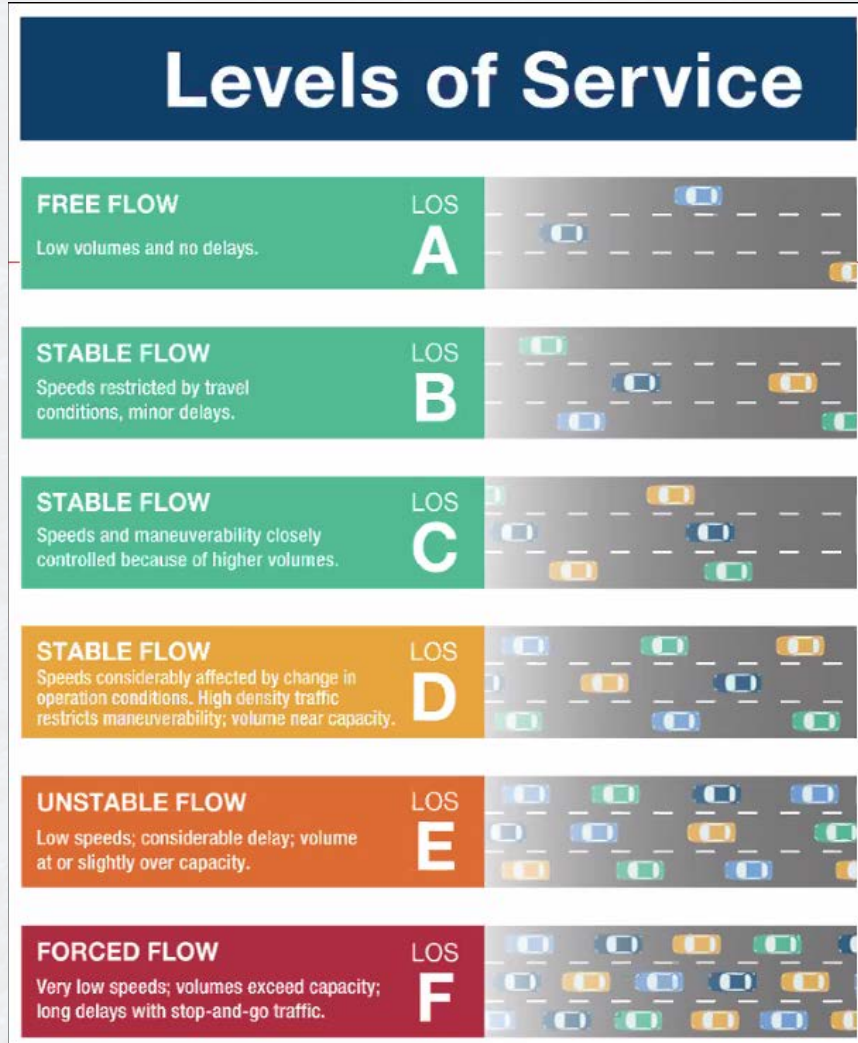


Study Parameters

- 50 Intersections Included
 - 25 on TxDOT roadways
 - 25 on City streets
- Did not include those under construction or in design.
- Studied two scenarios:
 - Existing traffic conditions
 - Projected conditions in 2035
- Level of Service (LOS) D was used as acceptable standard.
- Identify potential mitigation measures to resolve congestion issues.



Level of Service Descriptions

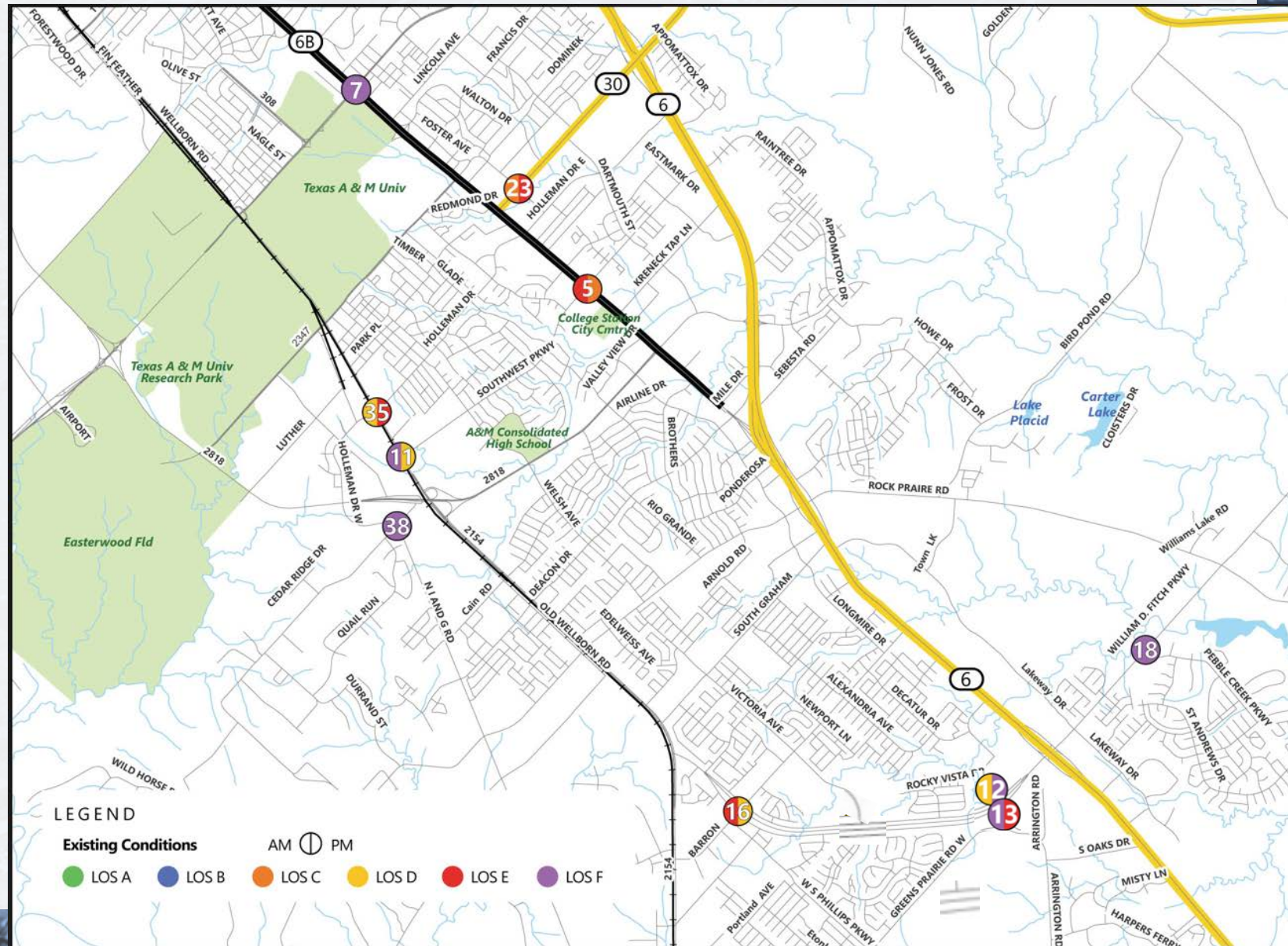


	Traffic lights	Stop signs /roundabout
Level of service	Delay (s/veh)	Delay (s/veh)
A	0-10	0-10
B	10-20	10-15
C	21-35	16-25
D	36-55	26-35
E	56-80	36-50
F	>80	>50



Existing Conditions

- 10 intersection failing LOS
 - 8 on TxDOT roadways
 - 2 on City streets
- The two City intersections are in design for improvements:
 - #18: Willam D. Fitch Pkwy at Pebble Creek Pkwy – Signal
 - #38: Holleman Dr. South at North Dowling Rd – Roundabout
- Brazos County Transportation Bond from 2022 includes project on William D. Fitch Pkwy at Arrington Rd to SH 6.



Mitigation Strategies and Next Steps

- Minor strategies:
 - Signal optimization
 - Addition of turn lanes
 - Extend turn lanes or lane reconfiguration
- Major strategies:
 - Change in traffic control such as adding traffic signal or roundabout
 - Significant intersection redesign such as grade separations, displaced left or other innovative intersection configurations
- Next Steps:
 - On-going monitoring of performance and safety of intersections
 - Obtain funding through MPO, TxDOT safety funds, or City unfunded project or bond

